



GUARDIANDOORS.COM

0800 783 6602

ROLLER SHUTTERS - SECTIONAL OVERHEAD DOORS - INSULATED DOORS - FOLDING DOORS  
STEEL DOORS - FIRE RATED DOORS - SECURITY DOORS - SLIDING GATES - HIGH SPEED DOORS

## THERMAL BREAK COMMERCIAL

### Great finish with good insulation properties

The Thermal Break Commercial insulated roller shutter is suitable for commercial and industrial usage. The shutter's curtain is a foam filled steel 90mm profile of contemporary design. Suitable for high usage the shutter provides a secure insulated portal between environments.

- Certified U value of 3.3 w/m<sup>2</sup>k
- 90mm CFC-free foam filled rolled steel profile
- Spans widths up to 8000mm with effective heat and sound insulation
- Single and three phase motor options relative to use and size
- Range of control options
- Range of standard factory colour finishes

Weight - 20kg/m<sup>2</sup>

Max size: 8m w x 8m h

Width - 1500 to max. 8000 mm

Height - 2000 to max. 8000 mm

#### Product Certifications

BS EN 13241-1:2003 - Industrial, commercial and garage doors and gates product standard - products without fire/smoke resistance.

BS EN 12424:2000 - Industrial, commercial and garage doors and gates. Resistance to wind load. Classification 5.

BS EN 12453:2001 - Industrial, commercial and garage doors and gates. Safety in use of power operated doors.

#### OPERATION

Motorised to allow controlled ascent and descent Tube Motor - Low duty cycle, or where limited to single phase supply

External Drive Motor - High duty cycle or for larger apertures

#### BOTTOM RAIL

Reinforced extruded aluminium section with strengthened core

Finish as delivered: polyester powder coated in standard RAL/BS colour

#### FRAMES/GUIDES

Heavy duty extruded aluminium guide profiles anchored direct to the structure



Guardian Industrial Doors Ltd  
Managing Director: RW Everitt Company Secretary: E Everitt  
Registered Office: 45 Progress Road, Leigh on Sea, Essex SS9 5PR  
Fax No 01702 260117  
Registered in England No 1447746



GUARDIANDOORS.COM

0800 783 6602

ROLLER SHUTTERS - SECTIONAL OVERHEAD DOORS - INSULATED DOORS - FOLDING DOORS  
 STEEL DOORS - FIRE RATED DOORS - SECURITY DOORS - SLIDING GATES - HIGH SPEED DOORS

**Construction Products Regulation**

**Declaration of conformity and performance**

1. Identification code – THERMAL BREAK COMMERCIAL
2. Serial Number - \_\_\_\_\_
3. Year of manufacture \_\_\_\_\_
4. Intended use - Internal or external access door.
5. Manufacturer - Guardian Industrial Doors LTD - 45 Progress rd, Leigh – On – Sea, Essex, SS9 5PR
6. Authorised representative : N/A
7. Relevant harmonised standards: BS EN 13241-1:2003+A1:2011, PDQ labs Warrington APT 1104 performed initial type tests under EN13241-1 2003, EN12424:2000, EN12444:2001, EN12604:2000, and issued test reports, 158735/1, 158735/2, 158735/3 157386
8. European Technical assessment: Not applicable.
9. Declared performance

	Guardian Industrial Doors LTD 45 Progress Road Leigh –On –Sea Essex SS9 5PR	
Characteristic	Declared Performance	Harmonised Standard
Resistance to wind load	Class 5	BSEN 13241-1:2003 + A1 :2011 (In accordance with the machinery directive MD/98/37/EC.)
Dangerous substances	None	
Safe opening	Pass	
Mechanical resistance and stability	Pass	
Operating forces	Pass	
Thermal resistance	3.3 w/m2k	
Air Permeability	NPD	
Durability of Water tightness, Air permeability and thermal resistance against degradation.	NPD	

Specific technical documentation: Operation and maintenance manual.

10. The performance of the product in points 1 and 2 is in conformity with the declared performance in point 9. This declaration of performance is the sole responsibility of the manufacturer identified in point 5.

Signed on behalf of the manufacturer by:

R. Everitt.

General Manager



Guardian Industrial Doors Ltd  
 Managing Director: RW Everitt Company Secretary: E Everitt  
 Registered Office: 45 Progress Road, Leigh on Sea, Essex SS9 5PR  
 Fax No 01702 260117  
 Registered in England No 1447746

## L20 DOORS / SHUTTERS / HATCHES

### 610 ROLLER SHUTTER

**Product reference:** GUARDIAN THERMAL BREAK COMMERCIAL

**Performance:** Certified U value of 3.3 w/m2k

**Arrangement:** Vertical roller shutter

A multipurpose insulated steel/aluminum vertically operated roller shutter.

#### **Dimensions:**

Opening height up to 8000mm, opening width up to 8000mm.

Shutter weight: 35 kg/m<sup>2</sup> of door opening.

#### **Curtain**

Constructed from 90mm insulated steel sections, each alternate lath is fitted with a steel or nylon end lock to prevent lateral movement and wind anchor locks on larger doors.

#### **Bottom Rail**

The base of the curtain is fitted with a heavy duty aluminum extrusion reinforcing rail, complete with rubber weather seal

#### **Side Guides**

80x 90mm steel roll formed guide rail with double brush seals on each side.

#### **Roller Assembly**

Constructed from mild steel tube of sufficient gauge to prevent deflection, mounted on bright steel shafts running in ball races, reduction drive gearing where applicable is by machine cut steel gears or chain drive to suit the size of the opening.

#### **Endplates**

The roller assembly is supported by mild steel endplates with mounting angles for fixing to the support structure.

#### **Roller Enclosure** (optional extra)

Formed from galvanised pressed sheet metal to enclose the rear of the shutter barrel and curtain assembly.

#### **Operation**

415v 50Hz 3 phase SafeDrive - motor with emergency hand chain override.

240v 50Hz 1 phase SafeDrive motor with emergency hand chain override (only used when necessary due to site power restrictions, the duty cycle of is reduced by 40%) complete with Guardian Safe Voltage control unit

#### **Finish**

Curtain from standard color range. Black Ral 9005, Sargasso Blue, Merlin Grey, Silver Ral 9006 ,White Ral 9003, Brown Vandyke, Poppy Red, Olive Green, Light Grey Ral 9007

All other elements powder coated to any standard BS or RAL number

Consult with Guardian Industrial Doors Ltd technical literature for details. Guardian Doors can also provide a design and specification advisory service and it is recommended that they are consulted early in the design process.

**Manufacturer:** GUARDIAN INDUSTRIAL DOORS 45 Progress Road Leigh On Sea Essex, SS9 5PR Tel: 01702 512424. Fax: 01702 510015. Email: [mail@guardiandoors.com](mailto:mail@guardiandoors.com) Web: [www.guardiandoors.com](http://www.guardiandoors.com)

## OPTIONS

### **Controls and operation**

Key switch control unit – flush mounted

Key switch control unit – surface mounted

External weatherproof push button

Key lockable push button control

Group control unit for up to 6 shutters simultaneously (**will require additional safety pressure edge.**)

Radio controlled (**will require additional safety pressure edge.**)

### **Safety Systems**

Safety bottom edge wireless

Safety bottom edge wireless

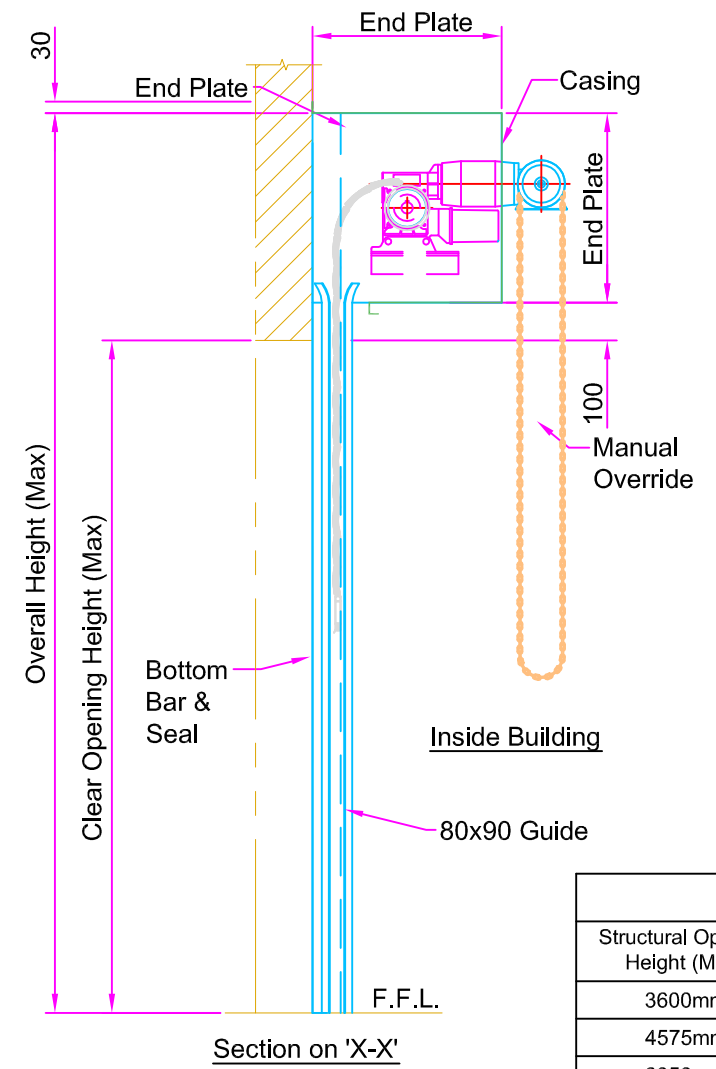
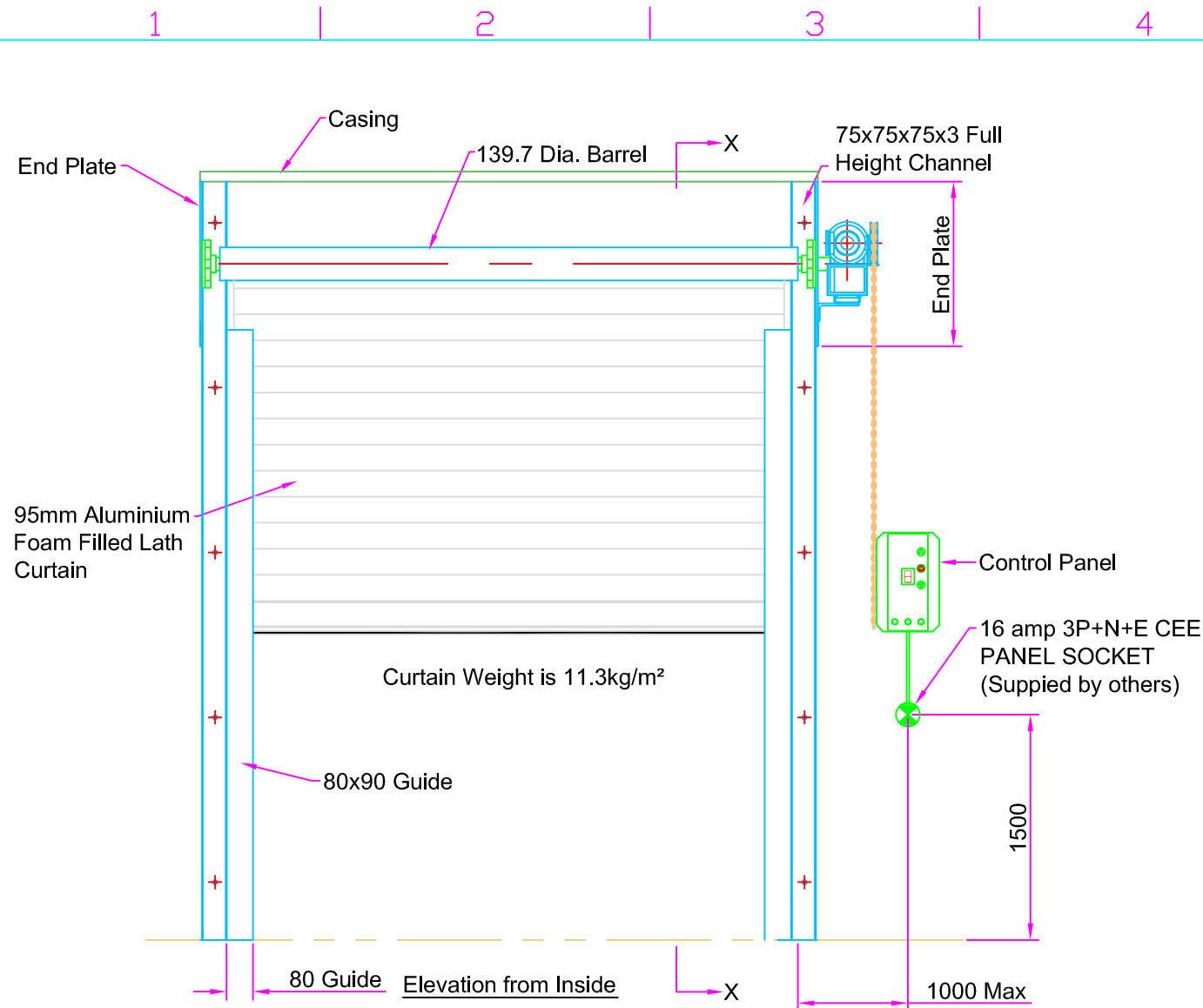
Safety photo cell beam

### **Security**

Ground locks and interlock facility

Bullet lock interlock box

Control panel on / off key



This drawing is supplied as a General Layout showing relative positions of main components and Guardian Industrial Doors Ltd accepts no responsibility for accuracy until a Site Survey has been undertaken.

If the End Plates and Barrel are within a False Ceiling or Soffit a Full Width Access Panel is required. (by others)

Some marking may occur at the top of the concave (barrel side) of the curtain over time. This is unavoidable and due to prolonged contact with the locking system.

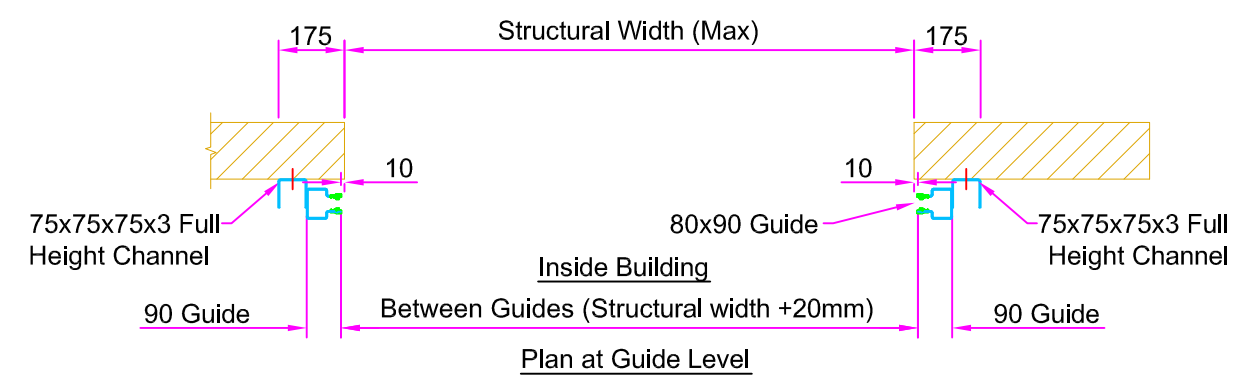
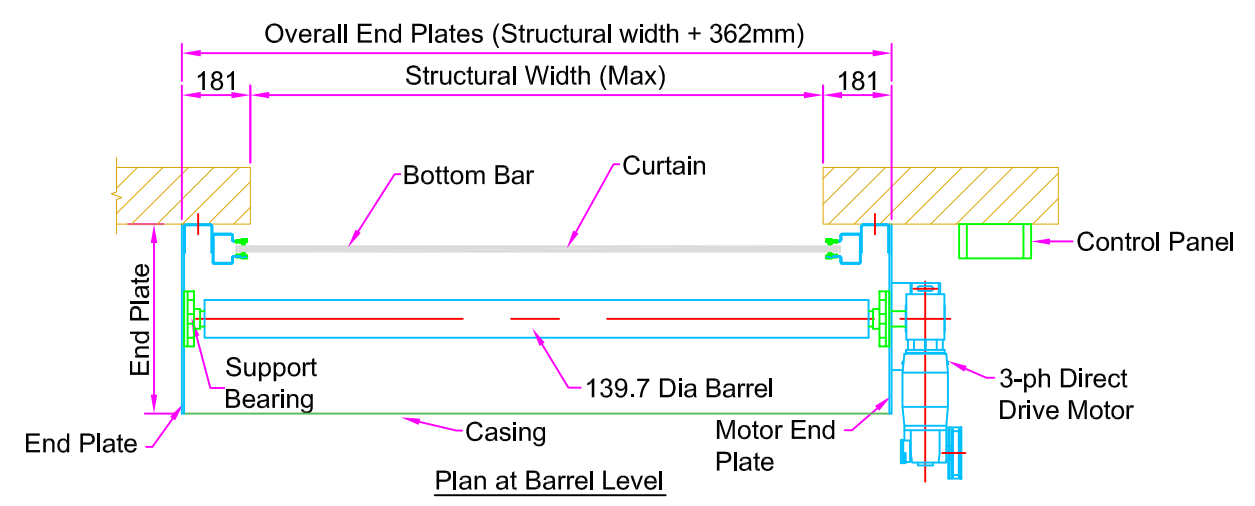
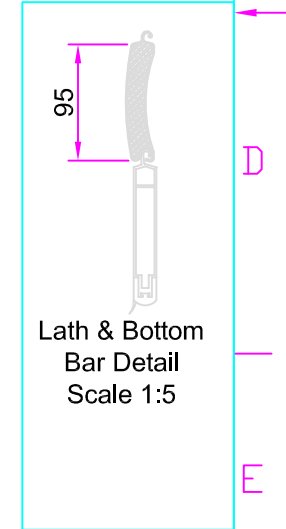
The Client is responsible for making sure that the structure is capable of withstanding the weight of the shutter and suitable fixing points are available for the End Plate and Guide support channel.

- AVAILABLE COLOURS:**
- \*BLACK RAL 9005
  - \*CORNFLOWER BLUE
  - \*ANTHRACITE RAL 7016
  - \*SILVER RAL 9006
  - \*WHITE RAL 9002
  - \*VAN DYKE BROWN
  - \*POPPY RED
  - \*JUNIPER GREEN
  - \*GOOSE WING GREY
  - \*SARGASSO BLUE

Generic Plate Sizing Chart

Structural Opening Height (Max)	End Plate	Barrel	Overall Shutter Height (Max)
3600mm	400mm	139.7x5	4100mm
4575mm	450mm	139.7x5	5125mm
6050mm	500mm	139.7x5	6650mm
6525mm	550mm	139.7x6.3	7175mm

Note: Table applies to a maximum structural opening width of 6000mm.



UNLESS OTHERWISE INDICATED ALL DIMENSIONS IN MILLIMETERS

DRAWN	CHK'D	APP'D	DATE	SCALE	Job No:	ISSUE	DATE	APP'D
DRWN					Guardian maintains a policy of progressive design and we reserve the right to modify specifications without prior notice or alteration to this drawing			
TITLE Thermal Break Commercial 3-ph Direct Drive Motor 95mm Aluminum Foam Filled Curtain Generic Drawing - Face Fixed Internally								
						1	26.03.14	PT