

L20 DOORS / SHUTTERS / HATCHES

610 ROLLER SHUTTER

GUARDIAN WR 15 Shutter

A vertical slotted lath security shutter designed for general security.

Dimensions:

Opening height up to 3400mm, opening width up to 4000mm. Maximum area 16m².

Shutter weight: 8 kg/m² of door opening.

Curtain

40mm deep aluminium double wall insulated lath

Bottom Rail

60mm deep extruded aluminium bottom rail with circular extruded rubber section at base.

Side Guides

53x 22mm extruded aluminium guide with integral box section for strength.

Shutter barrel

Continuous mild steel tube – with counterbalance springs inside the tube for manual operation shutters.

Hood

Compact four sided pre-finished steel cover to roller shutter coil.

Operation

Manual push up/pull down operation with locking bottom rail. Maximum area 8m².

Electric operation with 240v 1ph motor via control button unit. Maximum area 20m².

Finish

Polyester powder coated finish in standard white or brown. Consult with Guardian Doors for availability of alternative finishes and to obtain samples.

Optional extras:

External manual override for external fitted electric shutters.

External manual override lockable plate to crank hole.

External manual override for internal fitted electric shutters.

Internal manual override for internal fitted electric shutters

Electric options:

Double control push-button unit operating two shutters.

Two way momentary key switch unit for security.

Group command for controlling up to 4 shutters.

Remote control operation via key fob unit.

Safety photo cell beam.

Consult with Guardian Industrial Doors technical literature for details. Guardian Doors can also provide a design and specification advisory service and it is recommended that they are consulted early in the design process.

Manufacturer: **Manufacturer:** [GUARDIAN INDUSTRIAL DOORS 45 Progress Road Leigh On Sea Essex, SS9 5PR](#)

Tel: 01702 512424. **Fax:** 01702 510015. **Email:** mail@guardiandoors.com **Web:** www.guardiandoors.com

Product reference: [Guardian WR 15 Roller Shutter](#)

Performance: [Not applicable](#)

Arrangement: [Vertical roller shutter](#)

Shutter curtain: [40mm deep aluminium double wall insulated lath,](#)

Finish as delivered:

[Polyester powder coated](#)

Colour: [White / Brown](#)

Consult with Guardian Doors for availability of alternative finishes and to obtain samples.

Frame/ Guides:

Bottom Rail

[60mm deep extruded aluminium bottom rail with circular extruded rubber section at base.](#)

Side Guides

[53 x 22mm extruded aluminium guide with integral box section for strength.](#)

Shutter barrel

[Continuous mild steel tube – with counterbalance springs inside the tube for manual operation shutters.](#)

Hood

[Compact four sided pre-finished steel cover to roller shutter coil.](#)

Finish as delivered:

[Polyester powder coated](#)

Colour: [White / Brown](#)

Consult with Guardian Doors for availability of alternative finishes and to obtain samples.

Operation:

[Manual operation with shutter barrel fitted with counter balance springs inside the tube.](#)

[Electric operation with integral 240v 1ph tube motor and standard control button.](#)

Ironmongery: Consult with Guardian Doors for recommendations and details.

Other requirements:

Polycarbonate clear inserts to slots in curtain.
External manual override for external fitted electric shutters.
External manual override lockable plate to crank hole.
External manual override for internal fitted electric shutters.
Internal manual override for internal fitted electric shutters

Electric options:

Double control push-button unit operating two shutters.
Two way momentary key switch unit for security.
Group command for controlling up to 4 shutters.
Remote control operation via key fob unit.
Safety photo cell beam.



GUARDIANDOORS.COM

0800 783 6602

ROLLER SHUTTERS - SECTIONAL OVERHEAD DOORS - INSULATED DOORS - FOLDING DOORS
 STEEL DOORS - FIRE RATED DOORS - SECURITY DOORS - SLIDING GATES - HIGH SPEED DOORS

Construction Products Regulation

Declaration of conformity and performance

1. Identification code – WR 15 Roller shutter
2. Serial Number –
3. Year of manufacture -
4. Intended use - Internal or external access door.
5. Manufacturer - Guardian Industrial Doors LTD - 45 Progress rd, Leigh – On – Sea, Essex, SS9 5PR
6. Authorised representative : N/A
7. Relevant harmonised standards: BS EN 13241-1:2003+A1:2011, PDQ labs Warrington APT 1104 performed initial type tests under EN13241-1 2003, EN12424:2000, EN12444:2001, EN12604:2000, and issued test reports, 158735/1, 158735/2, 158735/3 157386
8. European Technical assessment: Not applicable.
9. Declared performance

	Guardian Industrial Doors LTD 45 Progress Road Leigh –On –Sea Essex SS9 5PR	
Characteristic	Declared Performance	Harmonised Standard
Resistance to wind load	NPD	BSEN 13241-1:2003 + A1 :2011 In accordance with the machinery directive MD/98/37/EC.)
Dangerous substances	None	
Safe opening	Pass	
Mechanical resistance and stability	Pass	
Operating forces	Pass	
Thermal resistance	NPD	
Air Permeability	NPD	
Durability of Water tightness, Air permeability and thermal resistance against degradation.	NPD	

Specific technical documentation: Operation and maintenance manual.

10. The performance of the product in points 1 and 2 is in conformity with the declared performance in point 9. This declaration of performance is the sole responsibility of the manufacturer identified in point 5.

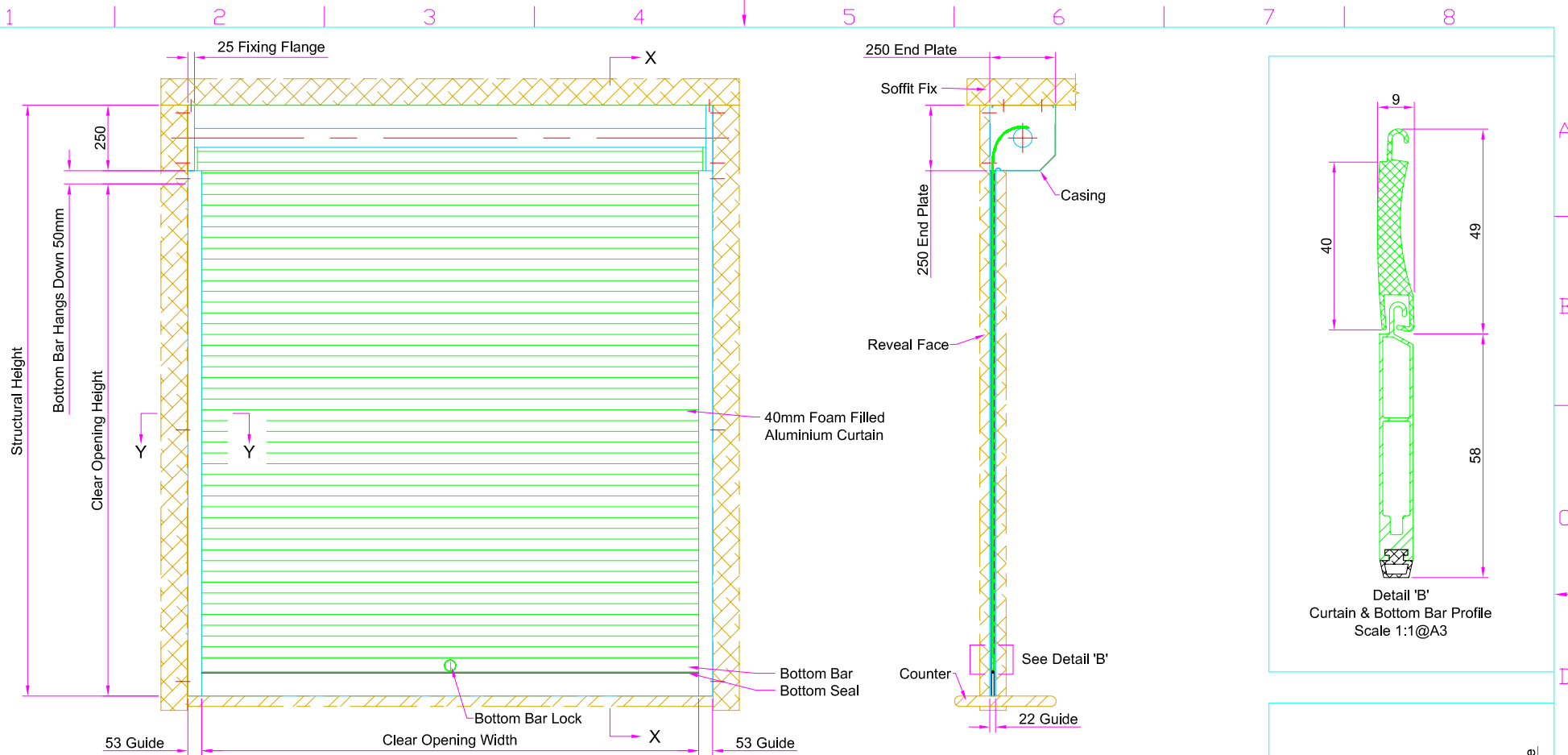
Signed on behalf of the manufacturer by:

R. Everitt.

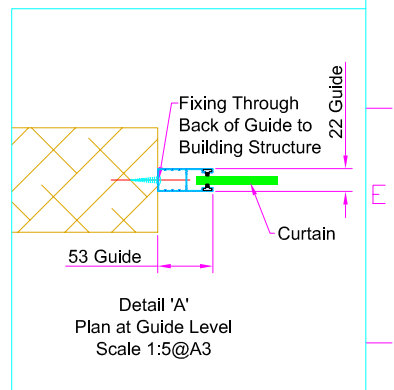
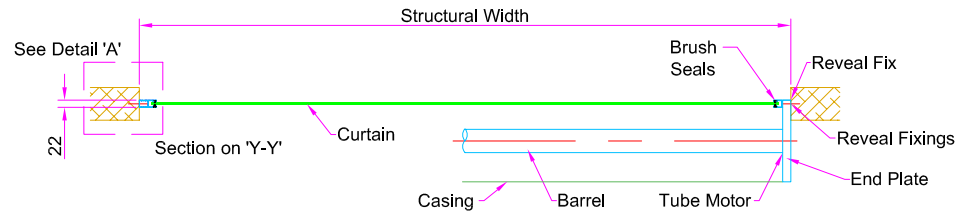
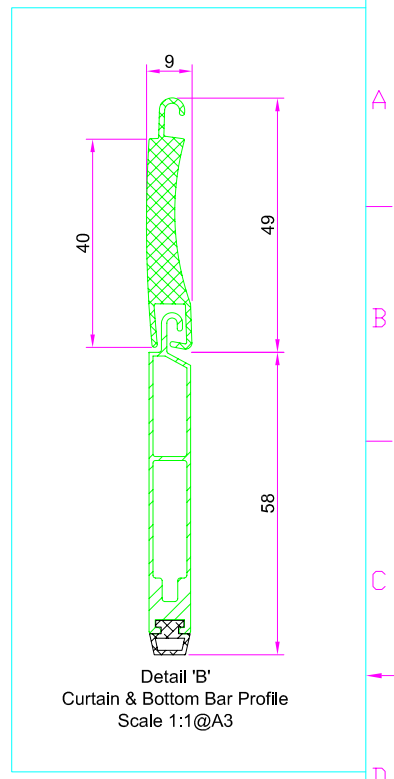
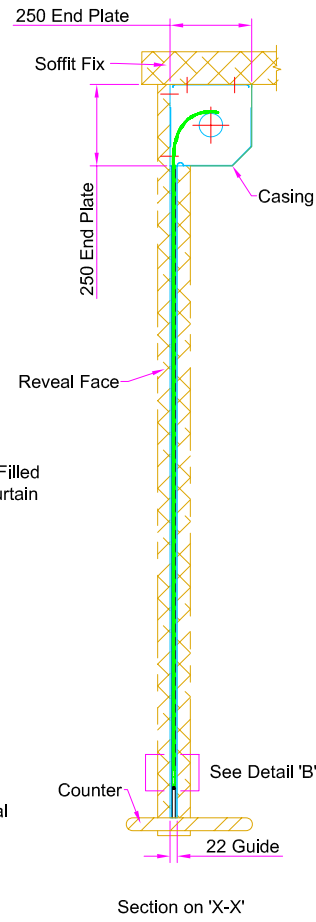
General Manager



Guardian Industrial Doors Ltd
 Managing Director. RW Everitt Company Secretary: E Everitt
 Registered Office: 45 Progress Road, Leigh on Sea, Essex SS9 5PR
 Fax No 01702 260117
 Registered in England No 1447746



Switched Fused Spur required at High Level and within 1m of motor. (by others). Motor to Right Hand Side when Viewed from Barrel Side

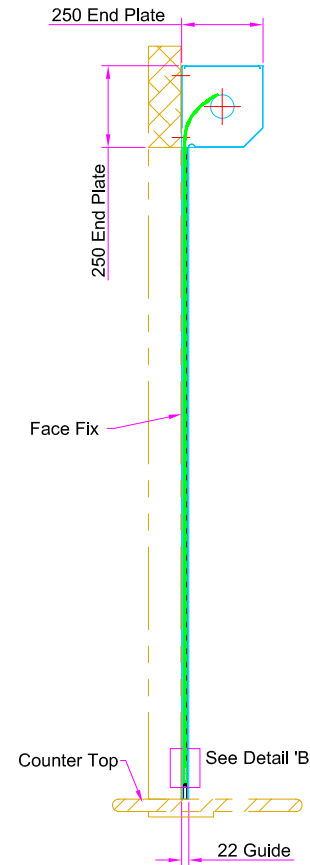
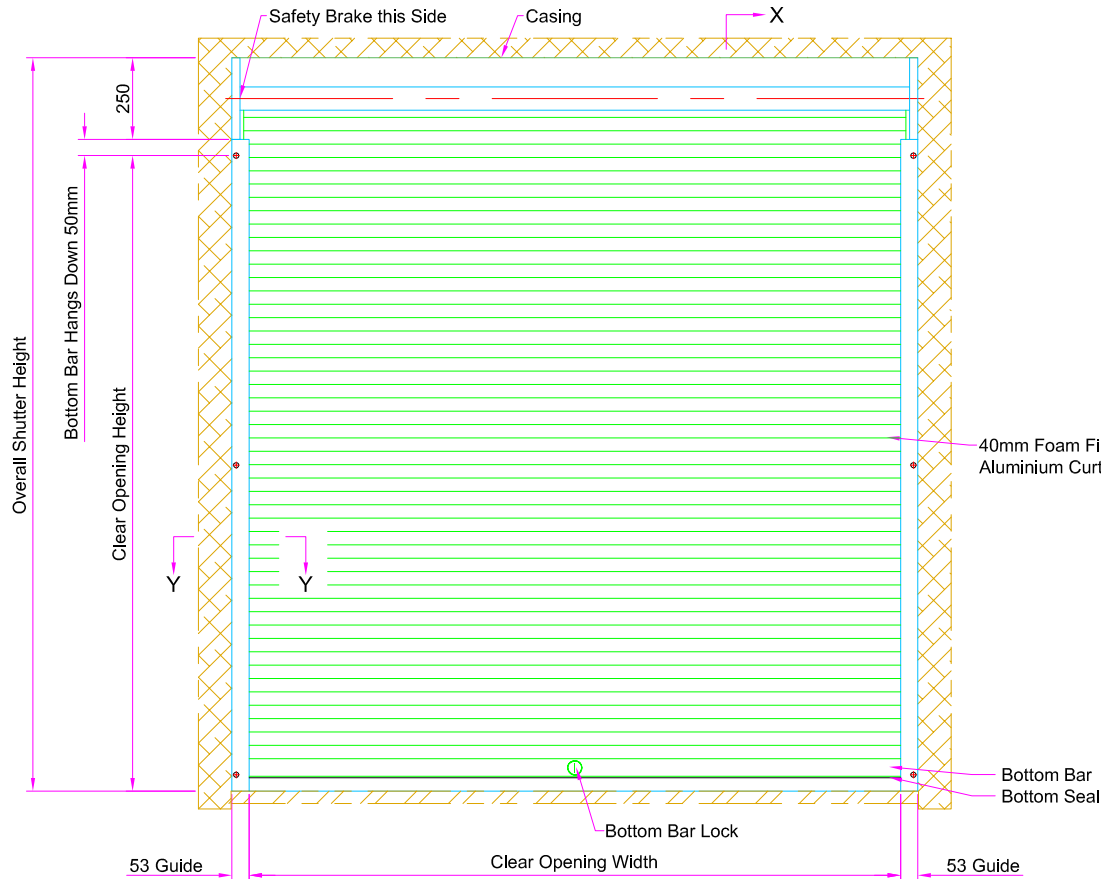


GUARDIAN
DOOR SOLUTIONS FOR ALL REQUIREMENTS

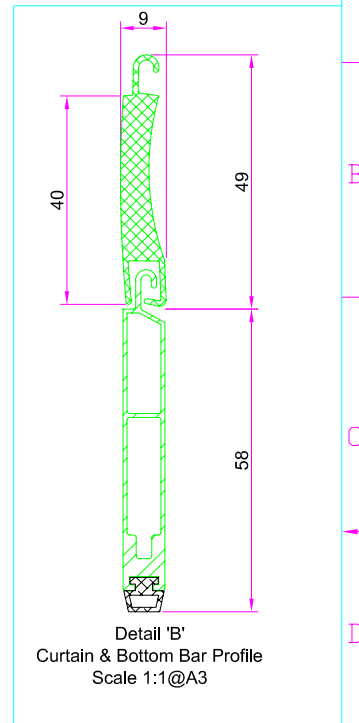
45 Progress Rd.
Leigh on Sea, SS9 5PR
Tel: +44(0)1702 512424
Fax: +44(0)1702 260117
www.guardiandoors.com

UNLESS OTHERWISE INDICATED
ALL DIMENSIONS IN MILLIMETERS
AND ALL TOLERANCES ±1.0

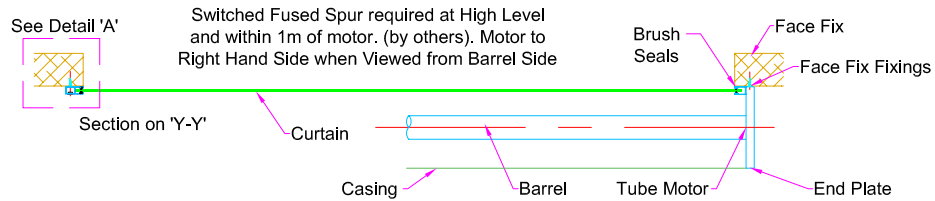
DRAWN	CHK'D	APP'D	DATE	SCALE	Drwg No: WR-15 Foam Filled-RF	ISSUE	DATE	APP'D
MB			22/09/06	NTS	Guardian maintains a policy of progressive design and we reserve the right to modify specifications without prior notice or alteration to this drawing			
TITLE								
WR-15 Generic Reveal Fixed 40mm Foam Filled Aluminium Curtain								
						1	09/06	RE



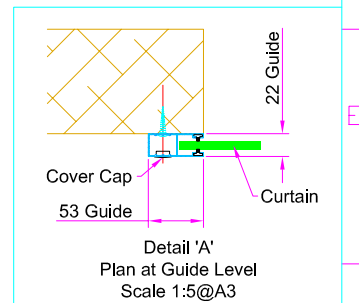
Section on 'X-X'



Detail 'B'
Curtain & Bottom Bar Profile
Scale 1:1@A3



Section on 'Y-Y'



Detail 'A'
Plan at Guide Level
Scale 1:5@A3

GUARDIAN
DOOR SOLUTIONS FOR ALL REQUIREMENTS

45 Progress Rd.
Leigh on Sea, SS9 5PR
Tel: +44(0)1702 512424
Fax: +44(0)1702 260117
www.guardiandoors.com

UNLESS OTHERWISE INDICATED
ALL DIMENSIONS IN MILLIMETERS
AND ALL TOLERANCES ±1.0

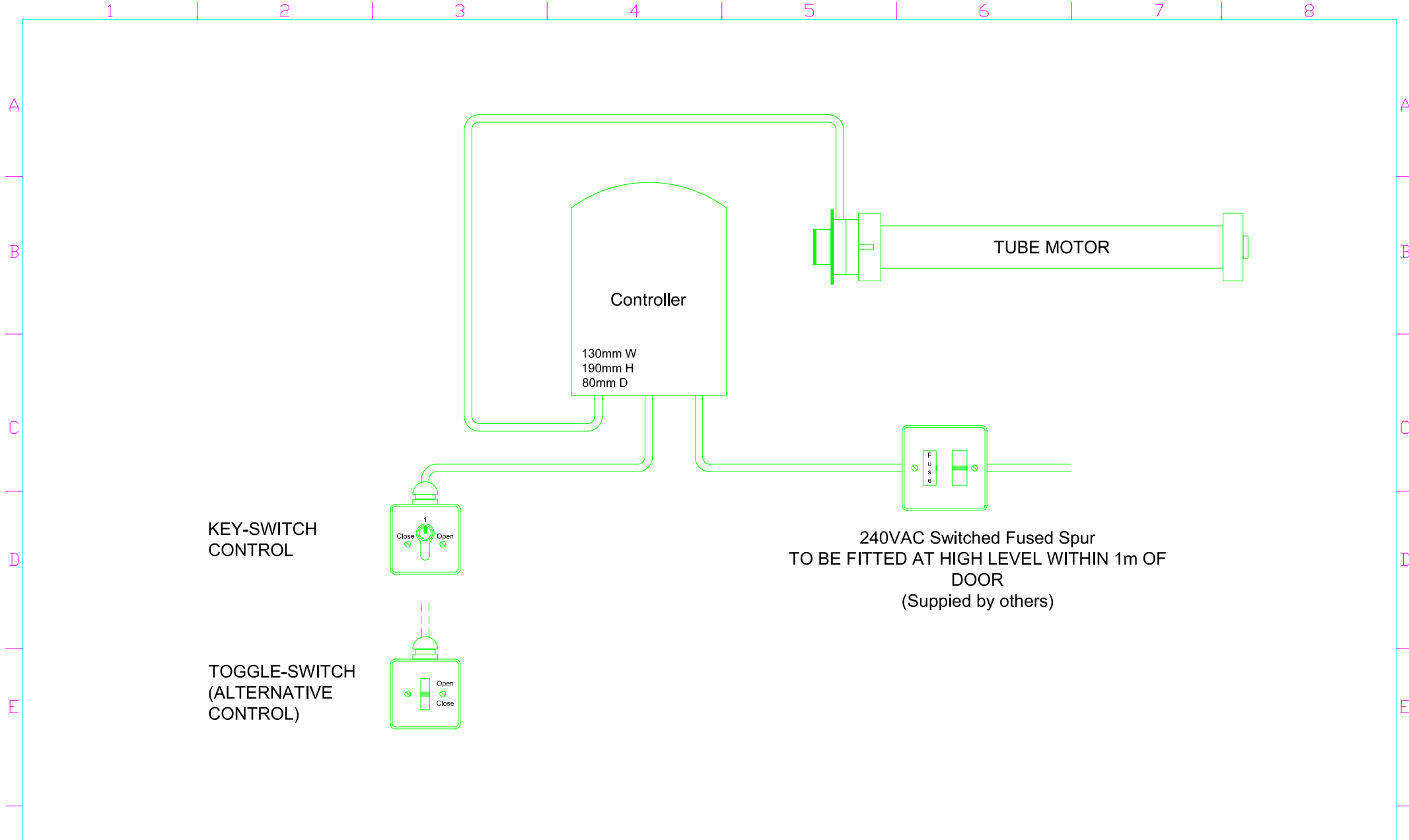
DRAWN	CHK'D	APP'D	DATE	SCALE
MB			22/09/06	1:20@A3

TITLE
WR-15 Generic Face Fixed
40mm Foam Filled Aluminium Curtain

Drwg No: WR-15 Foam Filled-FF

Guardian maintains a policy of progressive design and we reserve the right to modify specifications without prior notice or alteration to this drawing

ISSUE	DATE	APP'D
1	09/06	RE

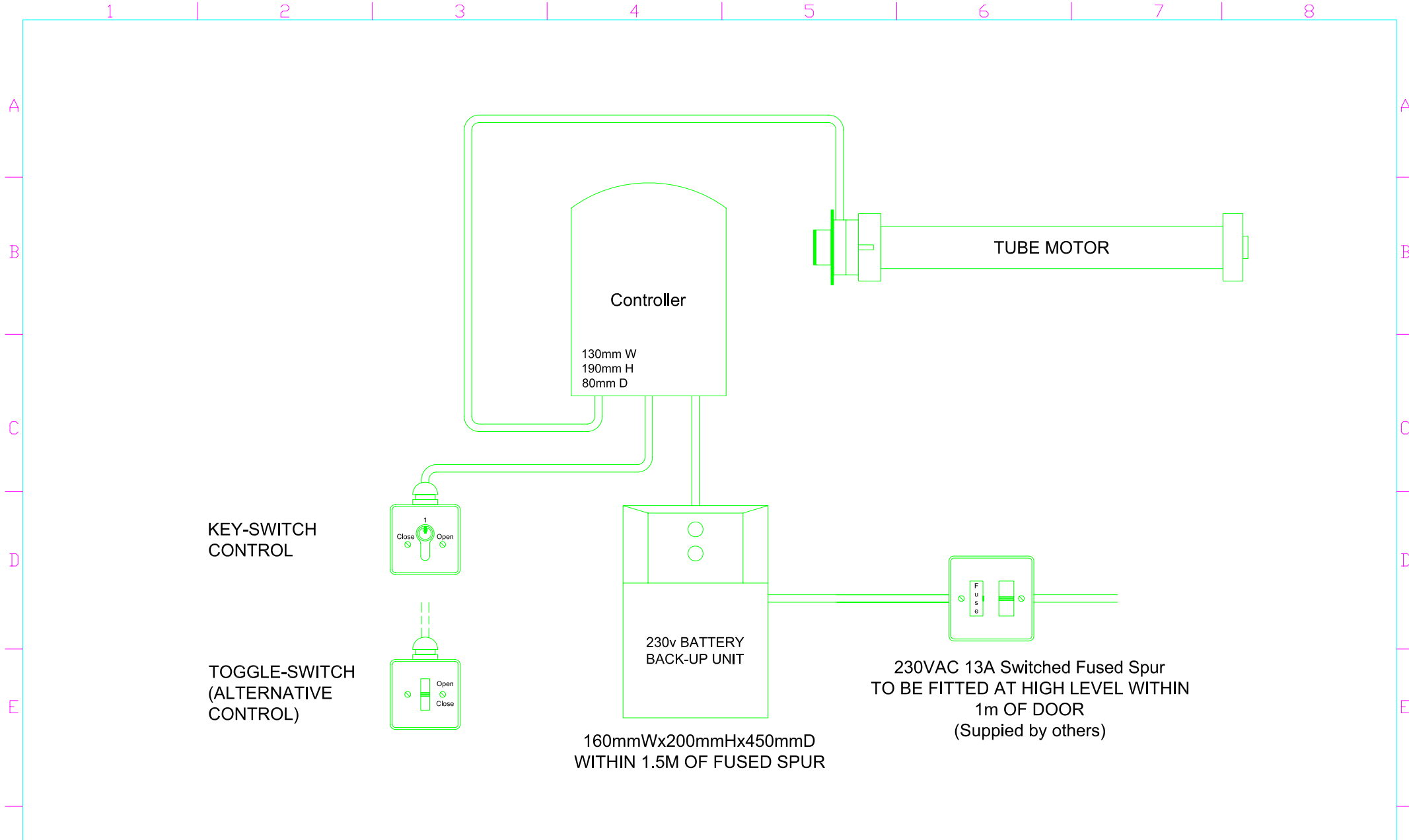


GUARDIAN
DOOR SOLUTIONS FOR ALL REQUIREMENTS

45 Progress Rd.
Lelgh on Sea, SS9 5PR
Tel: +44(0)1702 512424
Fax: +44(0)1702 260117
www.guardiandoors.com

UNLESS OTHERWISE INDICATED ALL DIMENSIONS IN MILLIMETERS AND ALL TOLERANCES ± 1.0

DRAWN	CHK'D	APP'D	DATE	SCALE	Drwg No: ES-TM-FM	ISSUE	DATE	APP'D
MB				NTS	Guardian maintains a policy of progressive design and we reserve the right to modify specifications without prior notice or alteration to this drawing			
TITLE								
FINISH								
						1	01/06	RWE

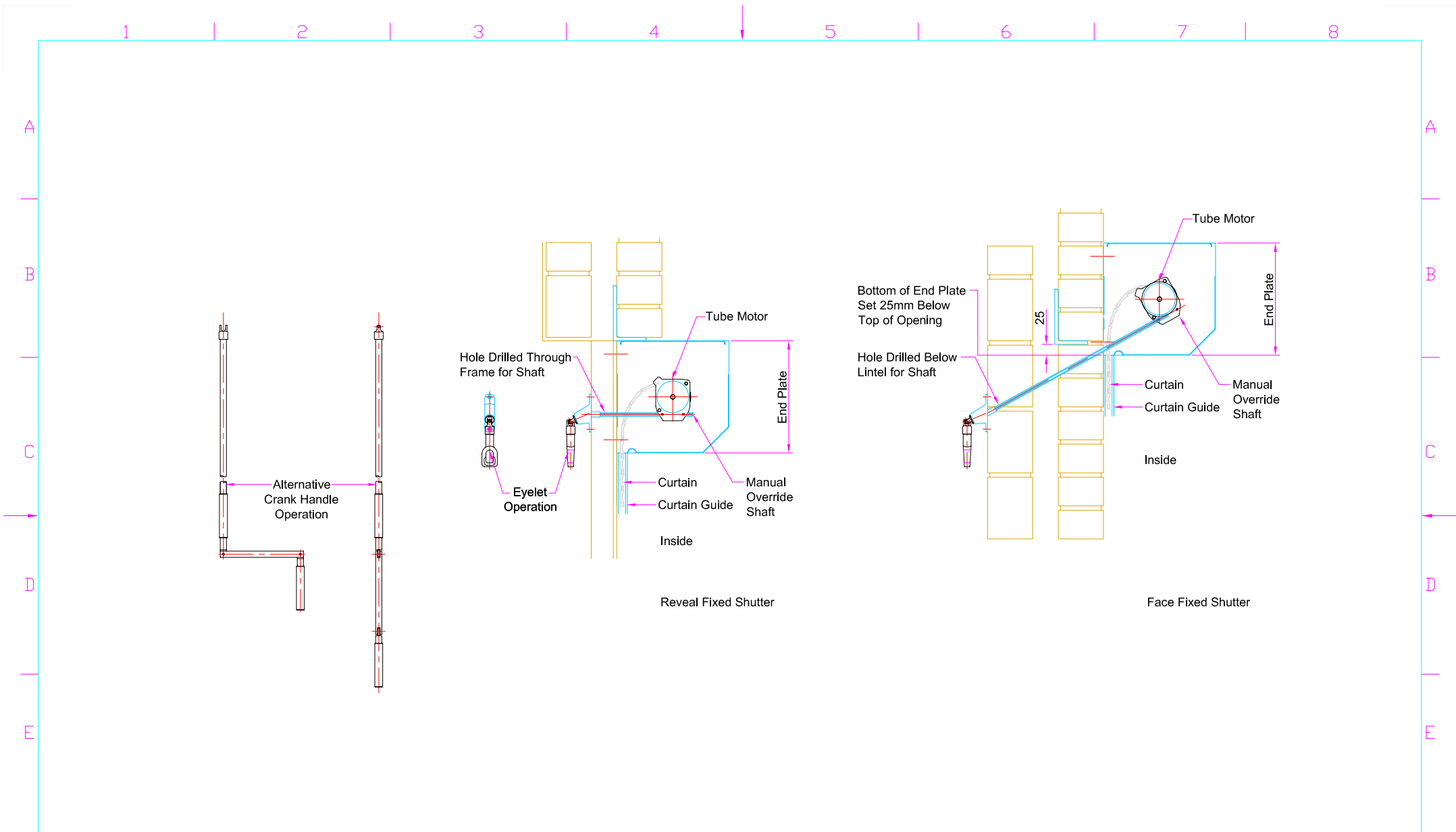


GUARDIAN
DOOR SOLUTIONS FOR ALL REQUIREMENTS

45 Progress Rd.
Leigh on Sea, SS9 5PR
Tel: +44(0)1702 512424
Fax: +44(0)1702 260117
www.guardiandoors.com

UNLESS OTHERWISE INDICATED ALL DIMENSIONS IN MILLIMETERS AND ALL TOLERANCES ± 1.0

DRAWN	CHK'D	APP'D	DATE	SCALE	Drwg No: ES-TM-FM-BB	ISSUE	DATE	APP'D
MB				NTS	Guardian maintains a policy of progressive design and we reserve the right to modify specifications without prior notice or alteration to this drawing			
TITLE ELECTRICAL SYSTEM TUBE MOTOR ASSEMBLY WITH FITTERS MATE								
FINISH								
						1	01/06	RWE



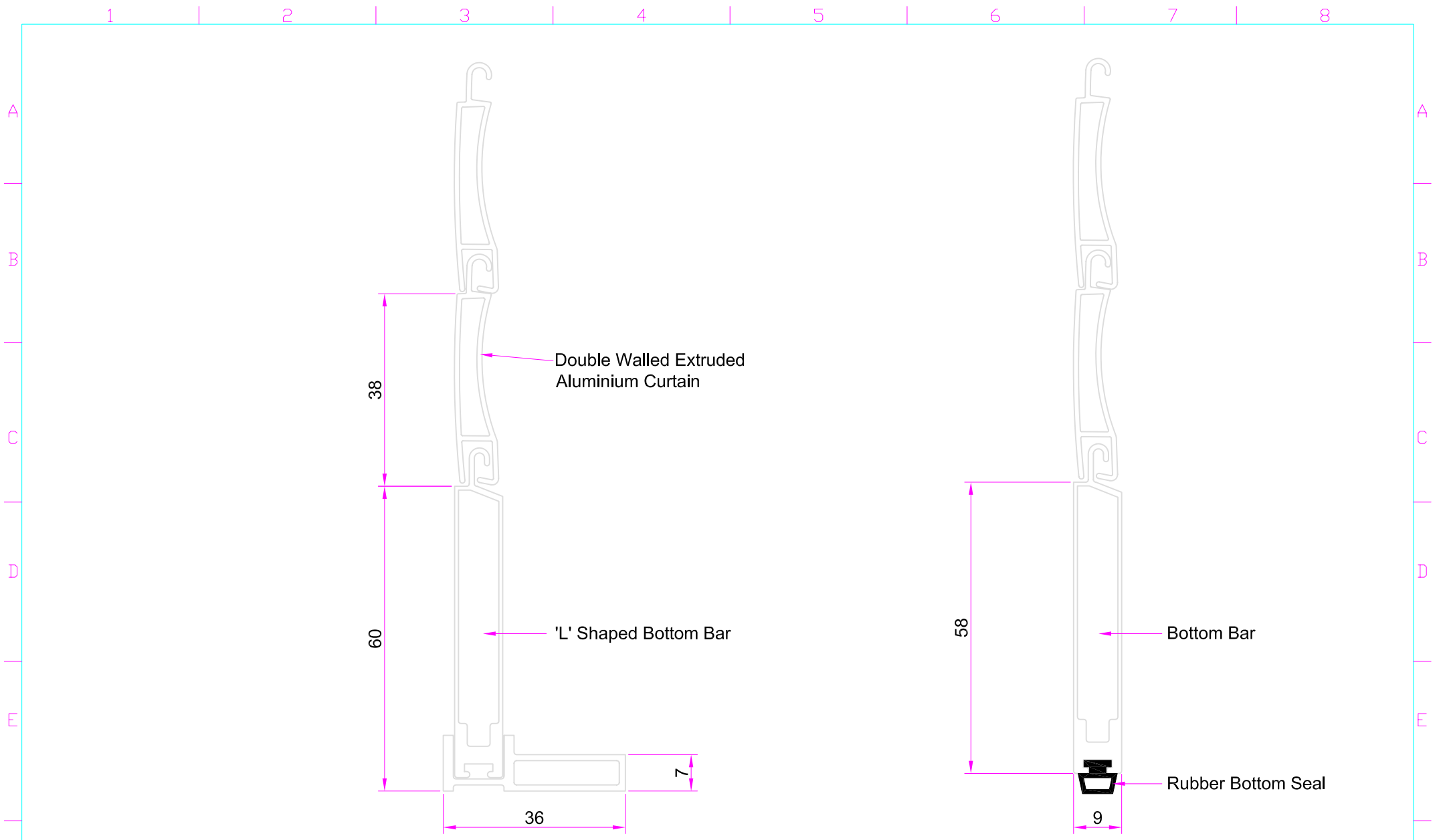
Remove ALL sharp edges

GUARDIAN
DOOR SOLUTIONS FOR ALL REQUIREMENTS

45 Progress Rd.
Leigh on Sea, SS9 5PR
Tel: +44(0)1702 512424
Fax: +44(0)1702 260117
www.guardiandoors.com

UNLESS OTHERWISE INDICATED
ALL DIMENSIONS IN MILLIMETERS
AND ALL TOLERANCES ±1.0

DRAWN	CHK'D	APP'D	DATE	SCALE	TECHNICAL FILE	DWG.No./PART No:	ISSUE	DATE	APP'D
MB				1:10@A3	107x	Manual Override			
TITLE Tube Motor - External Operation - Manual Override.									
FINISH			MAT'L		SIZE				



GUARDIAN

DOOR SOLUTIONS FOR ALL REQUIREMENTS

45 Progress Rd.
 Leigh on Sea, SS9 5PR
 Tel: +44(0)1702 512424
 Fax: +44(0)1702 260117
 www.guardiandoors.com

UNLESS OTHERWISE INDICATED ALL DIMENSIONS IN MILLIMETERS AND ALL TOLERANCES ±1.0

DRAWN	CHK'D	APP'D	DATE	SCALE	Drwg No: 107x-BB Detail	ISSUE	DATE	APP'D
MB				1:1	Guardian maintains a policy of progressive design and we reserve the right to modify specifications without prior notice or alteration to this drawing			
TITLE								
Bottom Bar Options								
FINISH								