

EUROLOOK SPECIFICATION

SHUTTER CURTAIN

Constructed from interlocking curved 75mm galvanised steel laths, gauge depending on the opening size. Alternate laths are fitted with nylon end locks to hold the curtain within the guide channels.

BOTTOM RAIL

Formed from cold rolled steel T - section to give rigidity and strength. As an extra rubber buffers can be added to provide a water tight barrier when the door is closed.

ROLLER BARREL ASSEMBLY

Constructed from steel tube, of sufficient diameter to resist deflection.

ELECTRIC MOTOR

Internal tubular motor with auto cut out limit switches.

ROLLER HEAD BRACKETS

Are fabricated from mild steel plate with fixing angles to support the shutter from the structure

COIL CASING

Constructed from steel sheet thickness dependant on shutter width (Optional Upgrade)

GUIDE ASSEMBLY

Guide assembly is of sufficient depth to withstand normal wind loadings. The exact size varies depending on the size of the opening. Guides are formed from cold rolled channel sections secured to the opening by continuous steel angles, or from specially designed pressed steel section to give additional protection from high winds.

LOCKING

Via the geared electric motor – additional locking systems available, Ground locks, Side locks, (with electric interlocks)

FINISH

All parts not galvanised are painted with one coat primer

CURTAIN - Constructed from a 50mm flat / 75mm curved steel scroll laths interlocked with steel end locks and galvanised double formed bottom rail.

OPTIONAL EXTRAS

Powder coated finish to any BS or RAL number

Battery Backup

Tube and link grille section

Eurolook Glazed Section

Ground locking units and interlock

Burglar alarm connection

Timer activation

Remote operation

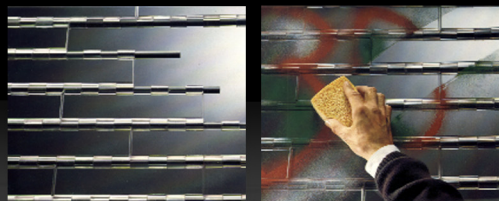
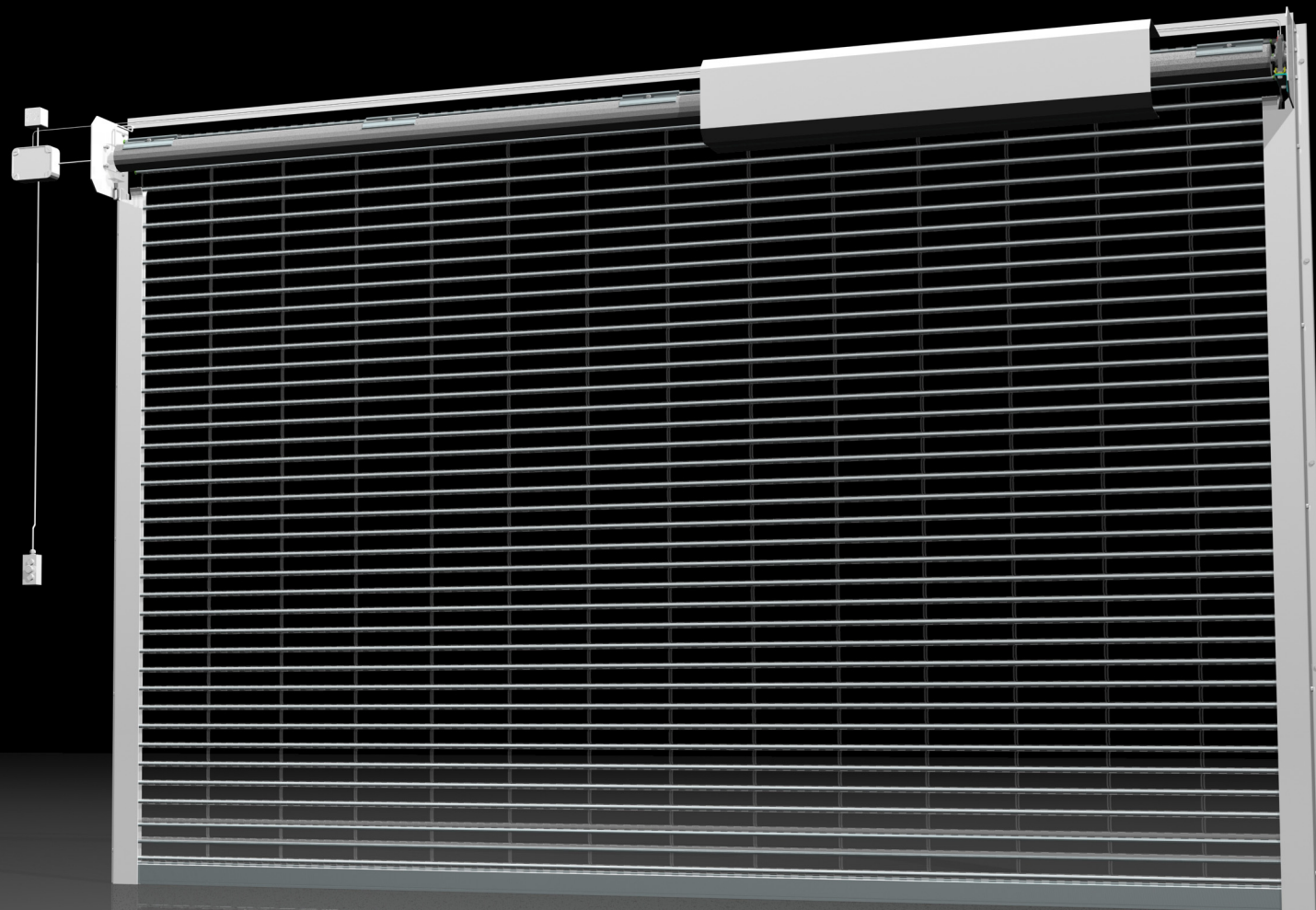
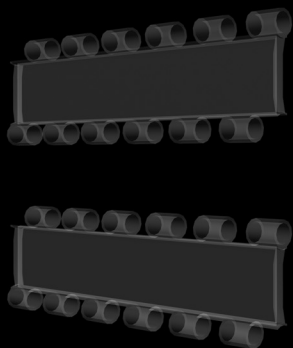
Sentinal security gate

GUARDIAN
DOOR SOLUTIONS FOR ALL REQUIREMENTS

TEL : 0800 7836602
GUARDIANDOORS.COM

COMMERCIAL RANGE

FULLY GLAZED POLYCARBONATE SHUTTER



EUROLOOK

Guardian offers a range of commercial roller shutter doors constructed from various materials ranging from aluminium to polycarbonate. Designed to meet planning regulations for local authorities the Guardian EuroLook is constructed from transparent polycarbonate sections held together by aluminium rods. The fact that it is impact resistant, scratch resistant, UV protecting and graffiti resistant make it perfect for use in an internal or external commercial environment. It is powered by an internal tubular motor and controlled via keyswitch as standard. Metal components available in any BS or RAL finish.