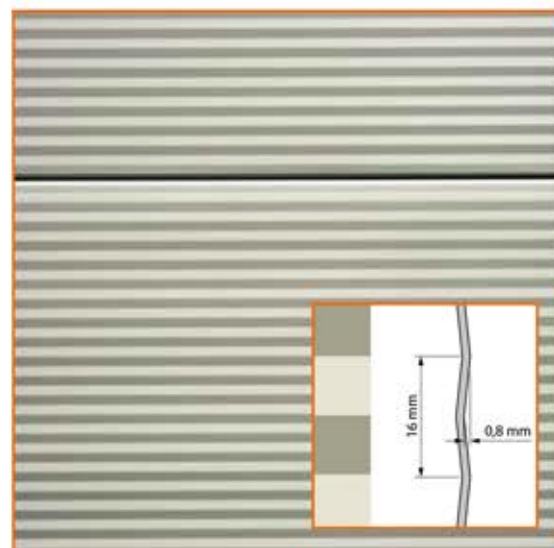




ISO 60 mm

The effective partition between climate zones

ISO 60 mm sectional doors are overhead doors with extra-insulating and sealing properties that are mainly used in locations where the division between different climate zones is important. If you need to keep your production hall or storage area at a constant temperature, the ISO 60 mm door is the right one for you. The micro-profiled steel plate panels have excellent sound-absorbing and heat-insulating properties and they can withstand all the elements.



Standard colours: RAL 9002 and RAL 9006



Very high insulative value

The panels of the ISO sectional doors are manufactured using what is known as the sandwich method, a process that entails a layer of CFC-free rigid polyurethane foam being inserted between two zinc-coated steel plate sheets and glued in place. The doors are available in the standard RAL 9002 or RAL 9006 colours. The steel plate sheets can also be spray painted in a RAL colour of your choosing.

U-value ISO 60 mm sectional door:
5,000 x 5,000 mm: 0.9 W/m²K

Interior view ISO 60 mm



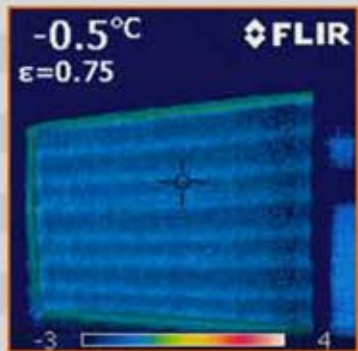
Standard frame
The standard frame between the door and the vertical railing ensures that the sides of the door seal properly.



Heavy-duty frame
We use this type of frame for doors with a dark colour. Due to the heat of the sun, the door may expand in the middle against the upper lintel. The heavy-duty frame prevents this from happening.



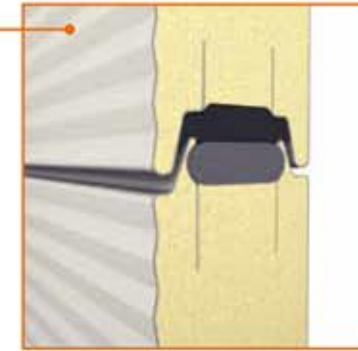
Wind load
Depending on the width of the door, Alpha will install reinforcing profiles on the door. Thanks to these, the door is able to withstand a heavy wind load, in accordance with the applicable rules and standards.



Infrared imaging
The ISO 60 mm sectional door insulates even more effectively than the ISO 40 mm door. We check this feature by taking infrared images of the assembled doors. Any light spots indicate where energy loss occurs, while the dark regions are well-insulated.



Top seal
The upper door panel of the ISO 60 door is equipped with a double EPDM rubber door seal, which provides additional insulation and ensures the best possible connection to the upper lintel. The door fits seamlessly and no energy is lost.



Panel seal
The panels of the ISO 60 door are specially sealed to make them completely wind and waterproof using Compriband, a polyurethane sealing strip that is attached between the panels. Additionally, the ISO 60 doors are fully insulated, because the inner and outer door panels are not attached to each other.



Single side hinge
Alpha uses single side hinges for doors that open up to 5 meters. They are sturdily built and ensure that the door hangs well and closes properly.



Double side hinge
Alpha uses double side hinges for doors that open more than 5 meters. This ensures that even the heaviest of doors hang well.



Floor seal
Alpha uses double rubber sealing strips to ensure that the door is flush with the floor. Together with a concrete strip, this will prevent water from seeping under the door.