

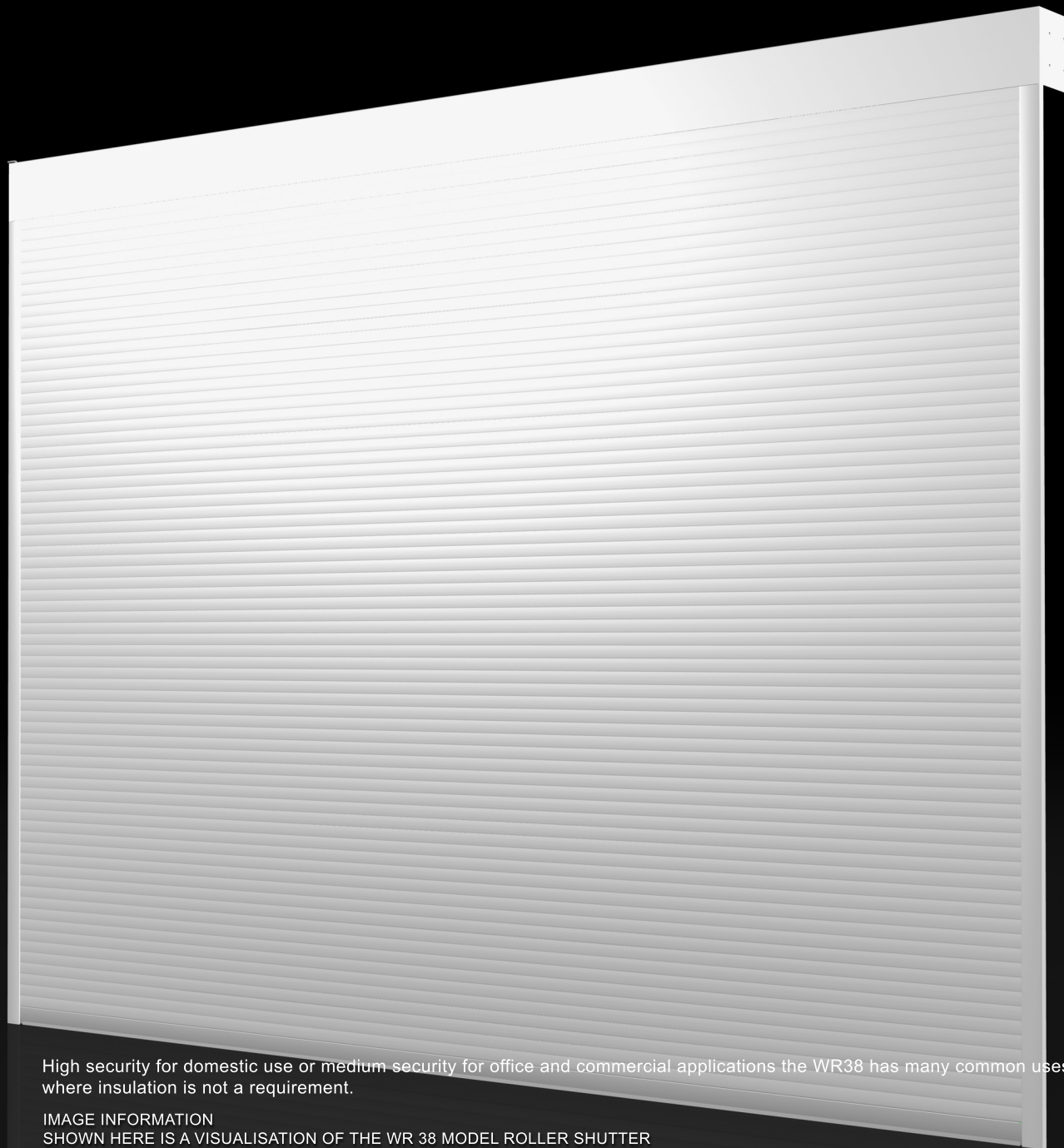
ALUMINIUM RANGE

WR-38

MAX SIZE OF APPROX 12m²
ALUMINIUM CONSTRUCTION
RANGE OF CONTROL OPTIONS
RANGE OF OPTIONAL EXTRAS

High security for domestic use or medium security for office and commercial applications the WR38 has many common uses where insulation is not a requirement.

IMAGE INFORMATION
SHOWN HERE IS A VISUALISATION OF THE WR 38 MODEL ROLLER SHUTTER





**GUARDIAN
INDUSTRIAL DOORS**

GUARDIANDOORS.COM


0800 783 6602

ROLLER SHUTTERS - SECTIONAL OVERHEAD DOORS - INSULATED DOORS - FOLDING DOORS
STEEL DOORS - FIRE RATED DOORS - SECURITY DOORS - SLIDING GATES - HIGH SPEED DOORS

Construction Products Regulation

Declaration of conformity and performance

1. Identification code – WR 38 Roller shutter
2. Serial Number –
3. Year of manufacture -
4. Intended use - Internal or external access door.
5. Manufacturer - Guardian Industrial Doors LTD - 45 Progress rd, Leigh – On – Sea, Essex, SS9 5PR
6. Authorised representative : N/A
7. Relevant harmonised standards: BS EN 13241-1:2003+A1:2011, PDQ labs Warrington APT 1104 performed initial type tests under EN13241-1 2003, EN12424:2000, EN12444:2001, EN12604:2000, and issued test reports, 158735/1, 158735/2, 158735/3 157386
8. European Technical assessment: Not applicable.
9. Declared performance

	Guardian Industrial Doors LTD 45 Progress Road Leigh –On –Sea Essex SS9 5PR	
Characteristic	Declared Performance	Harmonised Standard
Resistance to wind load	NPD	BSEN 13241-1:2003 + A1 :2011 In accordance with the machinery directive MD/98/37/EC.)
Dangerous substances	None	
Safe opening	Pass	
Mechanical resistance and stability	Pass	
Operating forces	Pass	
Thermal resistance	NPD	
Air Permeability	NPD	
Durability of Water tightness, Air permeability and thermal resistance against degradation.	NPD	

Specific technical documentation: Operation and maintenance manual.

10. The performance of the product in points 1 and 2 is in conformity with the declared performance in point 9.
This declaration of performance is the sole responsibility of the manufacturer identified in point 5.

Signed on behalf of the manufacturer by:

R. Everitt.



General Manager



Guardian Industrial Doors Ltd
Managing Director. RW Everitt Company Secretary: E Everitt
Registered Office: 45 Progress Road, Leigh on Sea, Essex SS9 5PR
Fax No 01702 260117
Registered in England No 1447746

610 ROLLER SHUTTER

Product reference: GUARDIAN WR 38 Roller Shutter

Performance: Not applicable

Arrangement: Vertical roller shutter

A vertical slotted lath security shutter designed for general security.

Dimensions:

Opening height up to 4000mm, opening width up to 4000mm. Maximum area 16m².

Shutter weight: 8 kg/m² (8.7 kg/m² for glazed) of door opening.

Curtain

38mm deep aluminium double wall lath,. Slots may be punched to provide 62% vision polycarbonate filled as option.

Bottom Rail

60mm deep extruded aluminium bottom rail with circular extruded rubber section at base.

Side Guides

60 x 24mm or 70 x 27mm extruded aluminium guide with integral box section for strength.

Shutter barrel

Continuous mild steel tube – with counterbalance springs inside the tube for manual operation shutters.

Hood

Compact four sided pre-finished steel cover to roller shutter coil.

Operation

Manual push up/pull down operation with locking bottom rail. Maximum area 8m².

Electric operation with 240v 1ph motor via control button unit. Maximum area 20m².

Finish

Polyester powder coated finish in standard white or brown. Consult with Guardian Doors Ltd for availability of alternative finishes and to obtain samples.

Optional extras:

Polycarbonate clear inserts to slots in curtain.

External manual override for external fitted electric shutters.

External manual override lockable plate to crank hole.

External manual override for internal fitted electric shutters.

Internal manual override for internal fitted electric shutters

Electric options:

Double control push-button unit operating two shutters.

Two way momentary key switch unit for security.

Group command for controlling up to 4 shutters.

Remote control operation via key fob unit.

Safety photo cell beam.

Consult with Guardian Industrial Doors technical literature for details. Guardian Doors can also provide a design and specification advisory service and it is recommended that they are consulted early in the design process.

Manufacturer: GUARDIAN INDUSTRIAL DOORS 45 Progress Road Leigh On Sea Essex, SS9 5PR

Tel: 01702 512424. Fax: 01702 510015. Email: mail@guardiandoors.com Web: www.guardiandoors.com

Product reference: Guardian WR 38 Roller Shutter

Performance: Not applicable

Arrangement: Vertical roller shutter

Shutter curtain: 38mm deep aluminium double wall lath,

Finish as delivered:

Polyester powder coated

Colour: White / Brown

Consult with Guardian Doors for availability of alternative finishes and to obtain samples.

Frame/ Guides:

Bottom Rail

60mm deep extruded aluminium bottom rail with circular extruded rubber section at base.

Side Guides

60 x 24mm or 70 x 27mm extruded aluminium guide with integral box section for strength.

Shutter barrel

Continuous mild steel tube – with counterbalance springs inside the tube for manual operation shutters.

Hood

Compact four sided pre-finished steel cover to roller shutter coil.

Finish as delivered:

Polyester powder coated

Colour: White / Brown

Consult with Guardian Doors for availability of alternative finishes and to obtain samples.

Operation:

Manual operation with shutter barrel fitted with counter balance springs inside the tube.
Electric operation with integral 240v 1ph tube motor and standard control button.

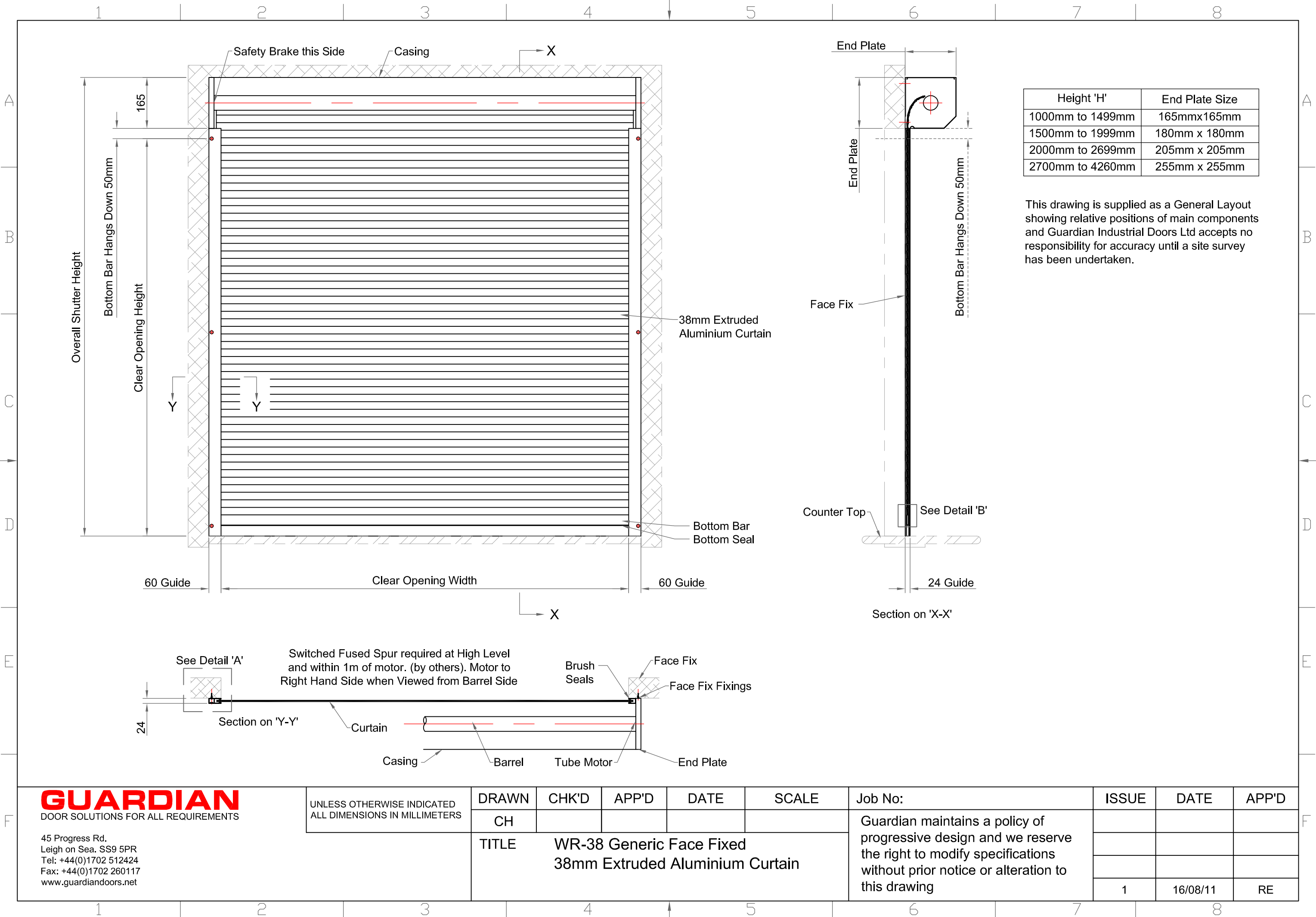
Ironmongery: Consult with Guardian Doors for recommendations and details.

Other requirements:

Polycarbonate clear inserts to slots in curtain.
External manual override for external fitted electric shutters.
External manual override lockable plate to crank hole.
External manual override for internal fitted electric shutters.
Internal manual override for internal fitted electric shutters

Electric options:

Double control push-button unit operating two shutters.
Two way momentary key switch unit for security.
Group command for controlling up to 4 shutters.
Remote control operation via key fob unit.
Safety photo cell beam.



GUARDIAN
DOOR SOLUTIONS FOR ALL REQUIREMENTS

45 Progress Rd,
Leigh on Sea. SS9 5PR
Tel: +44(0)1702 512424
Fax: +44(0)1702 260117
www.guardiandoors.net

UNLESS OTHERWISE INDICATED
ALL DIMENSIONS IN MILLIMETERS

DRAWN

CHK'D

APP'D

DATE

SCALE

Job No:

ISSUE

DATE

APP'D

CH

TITLE

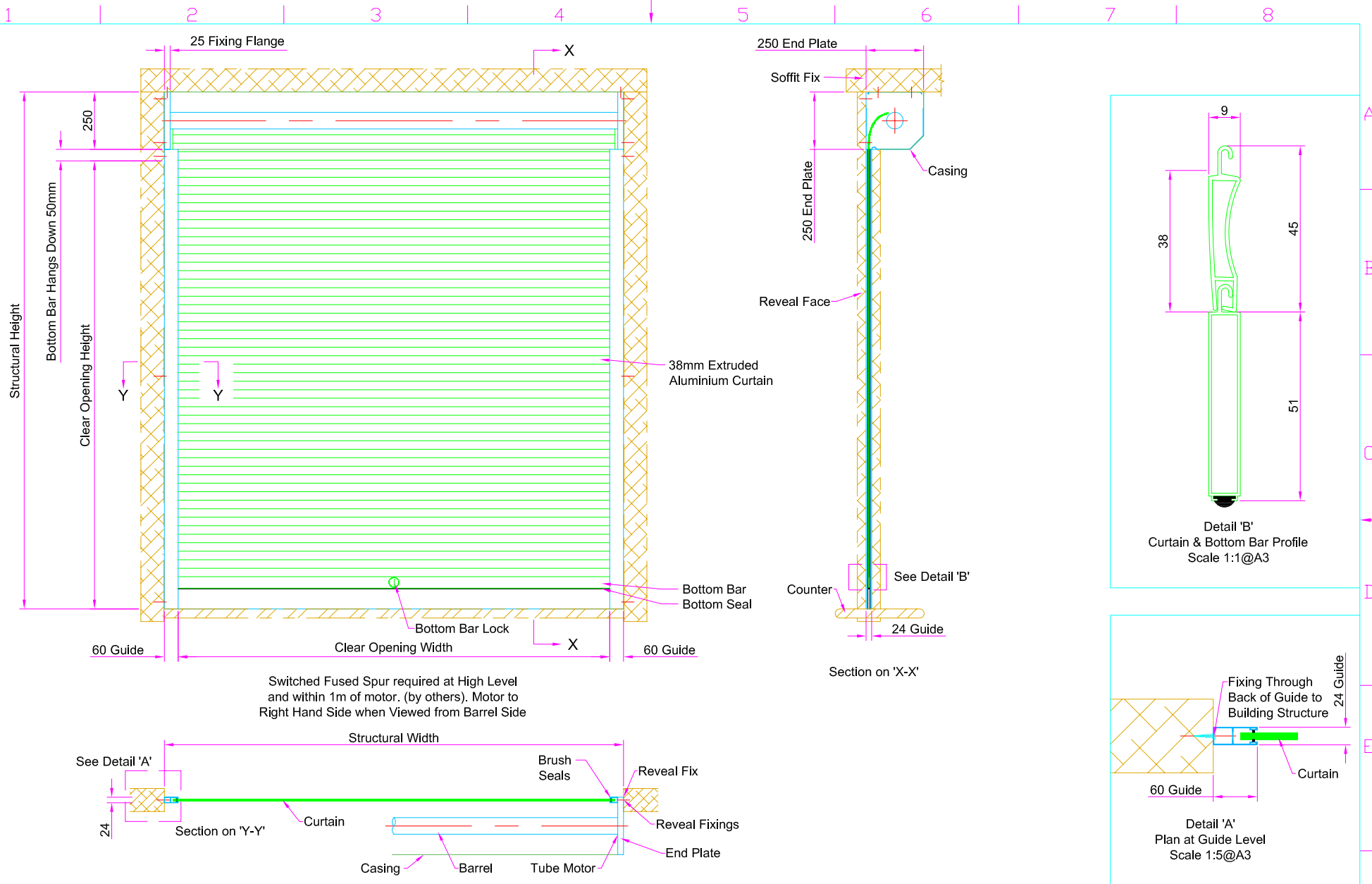
WR-38 Generic Face Fixed
38mm Extruded Aluminium Curtain

Guardian maintains a policy of
progressive design and we reserve
the right to modify specifications
without prior notice or alteration to
this drawing

1

16/08/11

RE



GUARDIAN
DOOR SOLUTIONS FOR ALL REQUIREMENTS

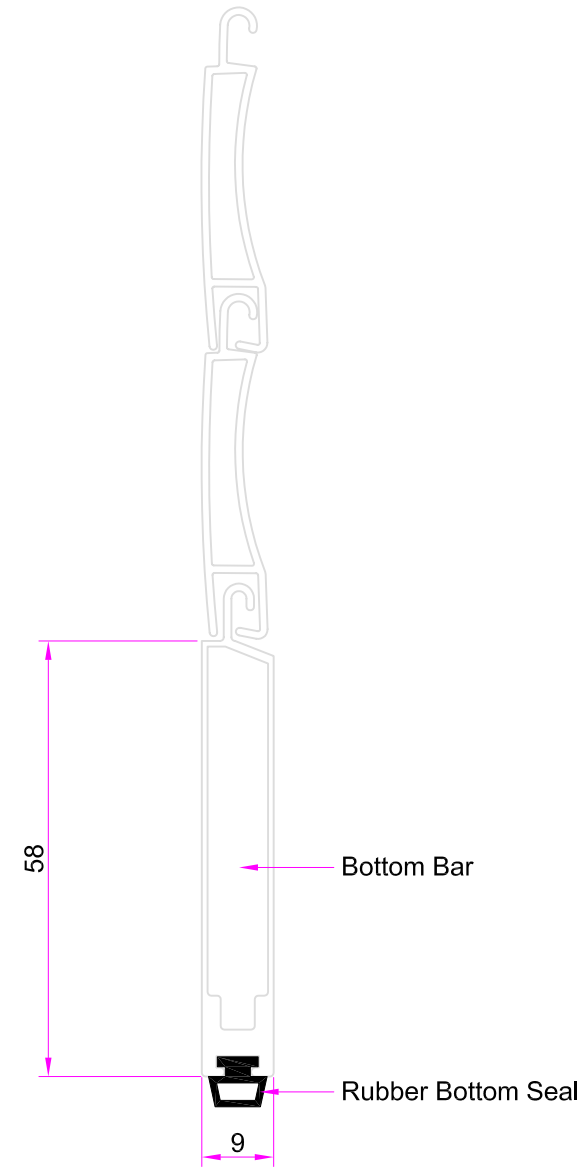
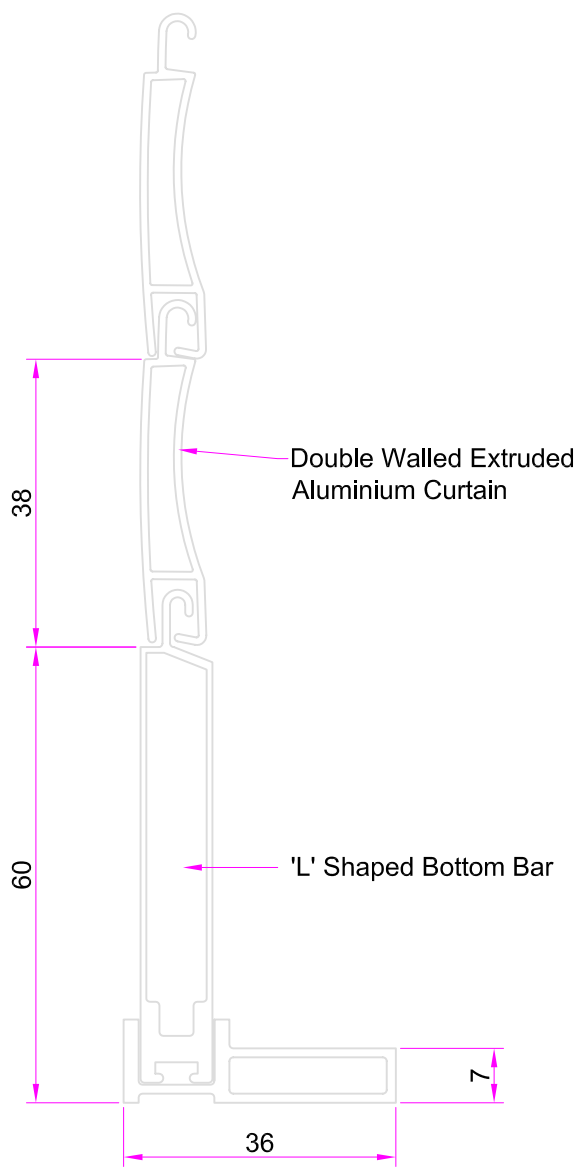
45 Progress Rd.
Leigh on Sea, SS9 5PR
Tel: +44(0)1702 512424
Fax: +44(0)1702 260117
www.guardiandoors.com

UNLESS OTHERWISE INDICATED
ALL DIMENSIONS IN MILLIMETERS
AND ALL TOLERANCES ± 1.0

DRAWN	CHK'D	APP'D	DATE	SCALE	Drwg No:	WR-38 DWEA-RF	ISSUE	DATE	APP'D
MB			22/09/06	NTS	Guardian maintains a policy of progressive design and we reserve the right to modify specifications without prior notice or alteration to this drawing				
TITLE WR-38 Generic Reveal Fixed 38mm Extruded Aluminium Curtain							3	08/10	RE
							2	03/07	RE
							1	09/06	RE

A
B
C
D
E
F

A
B
C
D
E
F



GUARDIAN

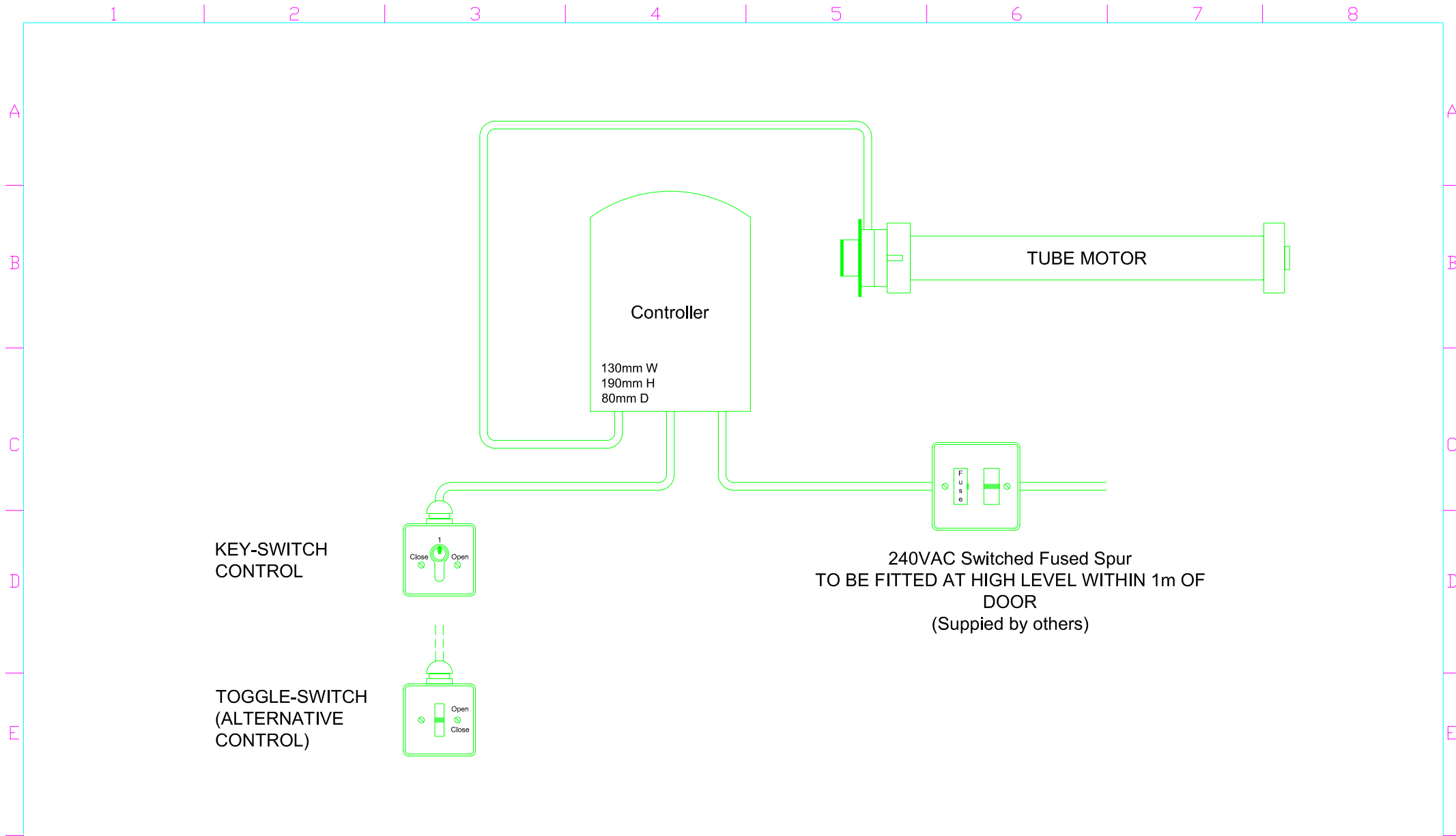
DOOR SOLUTIONS FOR ALL REQUIREMENTS

45 Progress Rd.
Leigh on Sea, SS9 5PR
Tel: +44(0)1702 512424
Fax: +44(0)1702 260117
www.guardiandoors.com

UNLESS OTHERWISE INDICATED ALL
DIMENSIONS IN MILLIMETERS AND ALL
TOLERANCES ± 1.0

DRAWN	CHK'D	APP'D	DATE	SCALE	Drwg No: 107x-BB Detail	ISSUE	DATE	APP'D
MB				1:1	Guardian maintains a policy of progressive design and we reserve the right to modify specifications without prior notice or alteration to this drawing			
TITLE Bottom Bar Options								
FINISH								

1 2 3 4 5 6 7 8

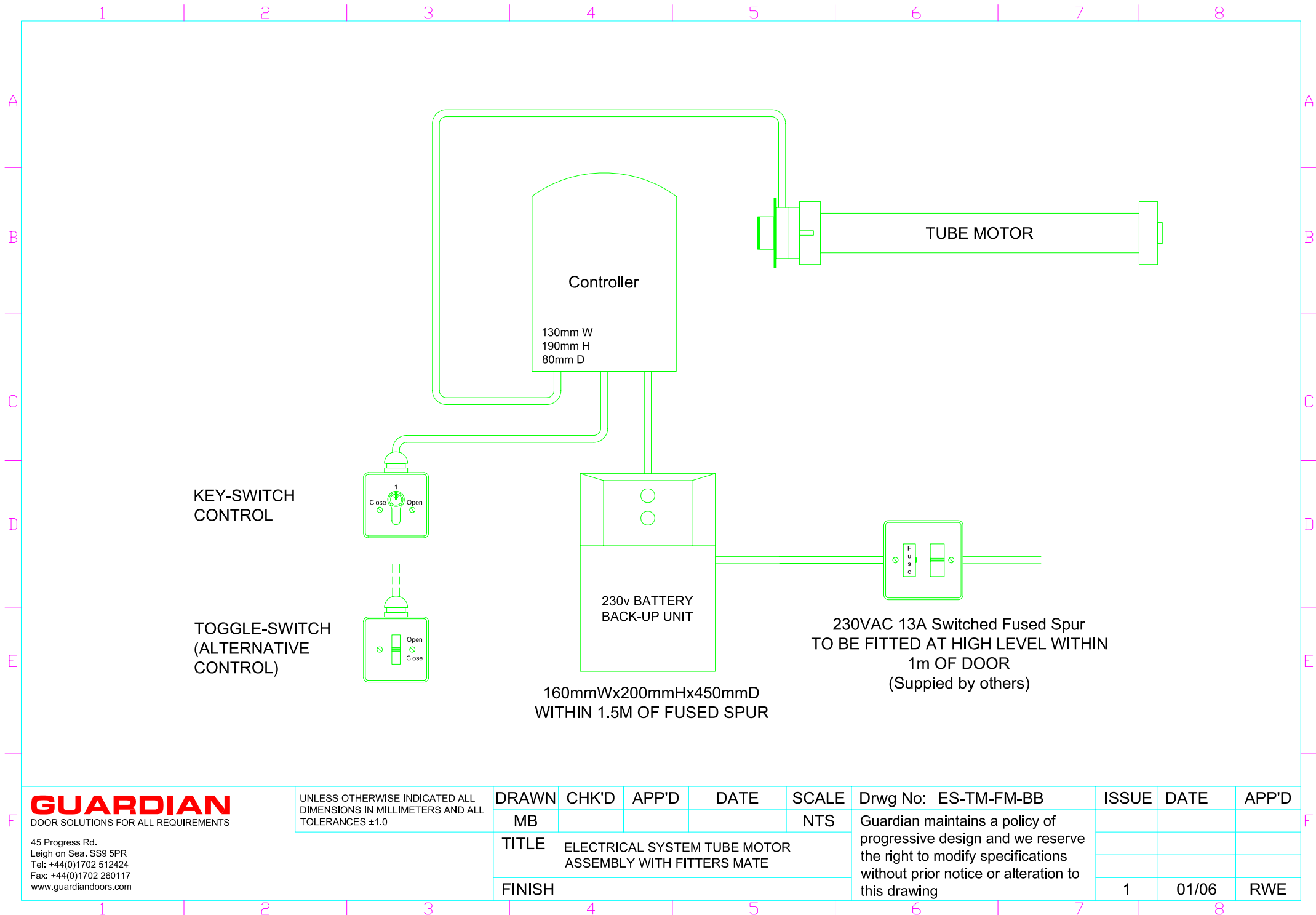


GUARDIAN
DOOR SOLUTIONS FOR ALL REQUIREMENTS

45 Progress Rd.
Leigh on Sea, SS9 5PR
Tel: +44(0)1702 512424
Fax: +44(0)1702 260117
www.guardiandoors.com

UNLESS OTHERWISE INDICATED ALL
DIMENSIONS IN MILLIMETERS AND ALL
TOLERANCES ± 1.0

DRAWN	CHK'D	APP'D	DATE	SCALE	Drwg No: ES-TM-FM	ISSUE	DATE	APP'D
MB				NTS	Guardian maintains a policy of progressive design and we reserve the right to modify specifications without prior notice or alteration to this drawing			
TITLE	ELECTRICAL SYSTEM TUBE MOTOR ASSEMBLY WITH CONTROLLER							
FINISH						1	01/06	RWE

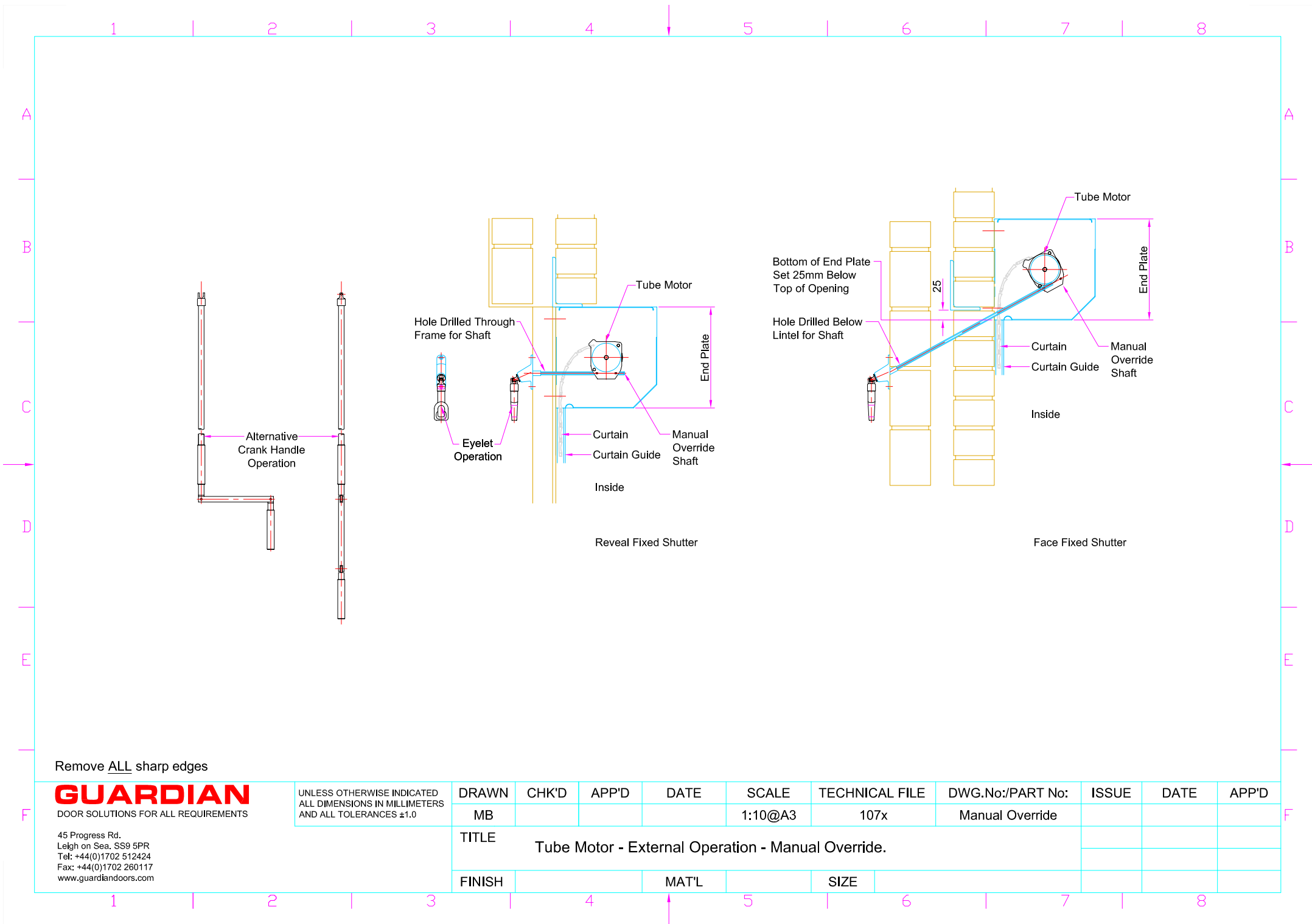


GUARDIAN
DOOR SOLUTIONS FOR ALL REQUIREMENTS

45 Progress Rd.
Leigh on Sea. SS9 5PR
Tel: +44(0)1702 512424
Fax: +44(0)1702 260117
www.guardiandoors.com

UNLESS OTHERWISE INDICATED ALL
DIMENSIONS IN MILLIMETERS AND ALL
TOLERANCES ± 1.0

DRAWN	CHK'D	APP'D	DATE	SCALE	Drwg No: ES-TM-FM-BB	ISSUE	DATE	APP'D
MB				NTS	Guardian maintains a policy of progressive design and we reserve the right to modify specifications without prior notice or alteration to this drawing			
TITLE	ELECTRICAL SYSTEM TUBE MOTOR ASSEMBLY WITH FITTERS MATE							
FINISH						1	01/06	RWE



Remove ALL sharp edges

GUARDIAN
DOOR SOLUTIONS FOR ALL REQUIREMENTS

45 Progress Rd.
Leigh on Sea, SS9 5PR
Tel: +44(0)1702 512424
Fax: +44(0)1702 260117
www.guardiandoors.com

UNLESS OTHERWISE INDICATED
ALL DIMENSIONS IN MILLIMETERS
AND ALL TOLERANCES ± 1.0

DRAWN	CHK'D	APP'D	DATE	SCALE	TECHNICAL FILE	DWG.No./PART No:	ISSUE	DATE	APP'D
MB				1:10@A3	107x	Manual Override			
TITLE									
Tube Motor - External Operation - Manual Override.									
FINISH			MAT'L		SIZE				