

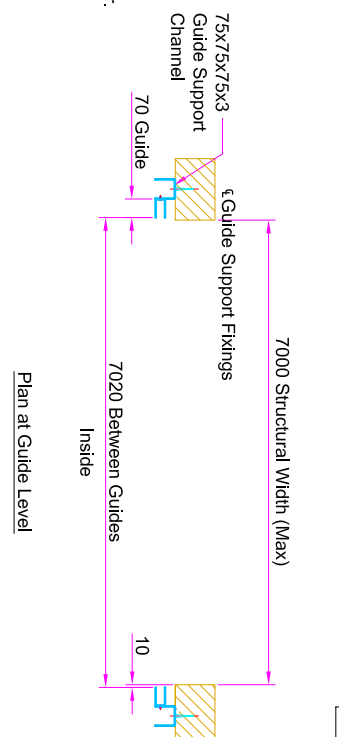
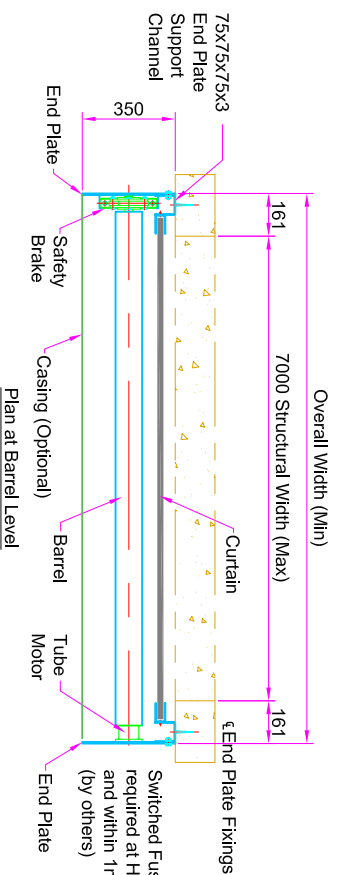
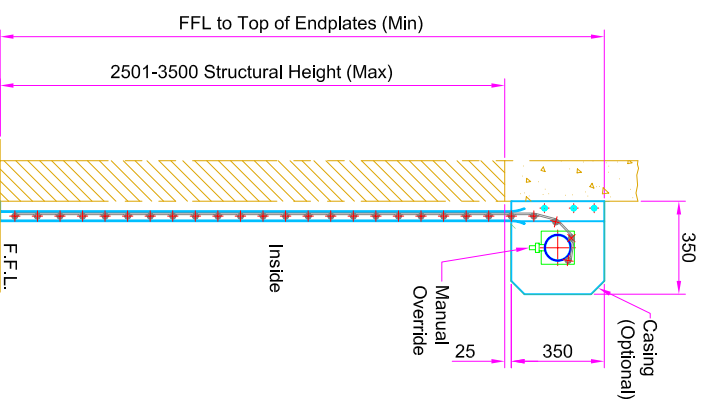
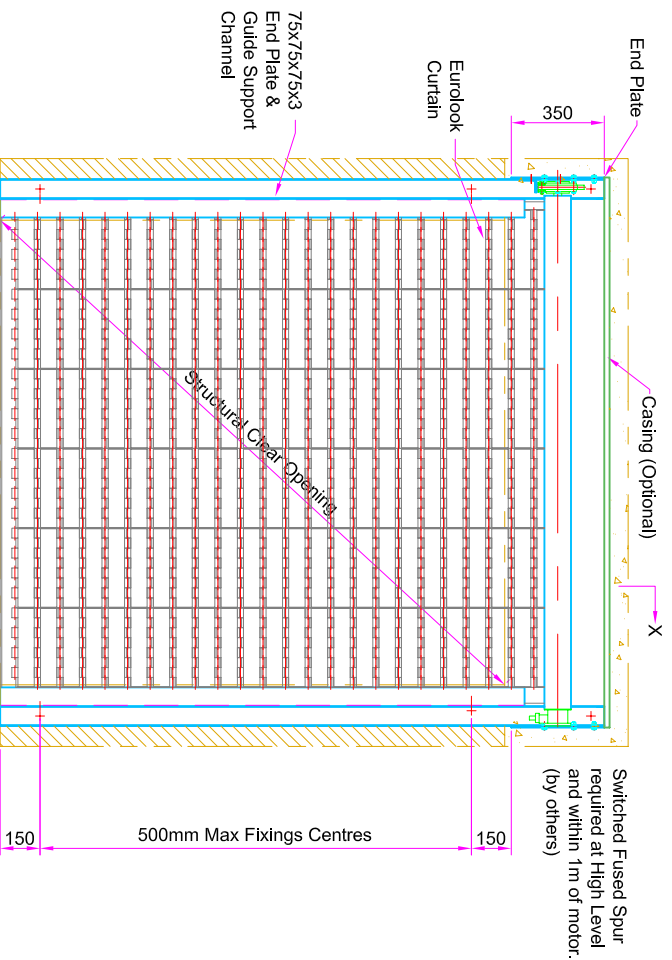
This drawing is supplied as a General Layout showing relative positions of main components and Guardian Industrial Doors Ltd accepts no responsibility for accuracy until a Site Survey has been undertaken. If the End Plates and Barrel are within a False Ceiling or Soffit a Full Width Access Panel is required. (by others)

Fixing To:-	
Steel	M8/M10 Set Screws
Brick	M8/M10 Rawbolts/Sleeve Anchors
Blockwork	M8/M10 Rawbolts/Sleeve Anchors
Timber	M8/M10 Coach Screws
Concrete	M8/M10 Rawbolts

The Client is responsible for making sure that the structure is capable of withstanding the weight of the shutter and suitable fixing points are available for the End Plate and Guide support channel.

The chart below shows the weight for a shutter with a maximum structural clear opening of 7000mmW x 3500mm H

	Weights (kg)
Barrel	94
Curtain	147
End Plates	12
Guides	31
Angles/Channels	42
Motor/HCG	20
Safety Brake	10
	356



GUARDIAN
DOOR SOLUTIONS FOR ALL REQUIREMENTS

UNLESS OTHERWISE INDICATED
ALL DIMENSIONS IN MILLIMETERS
AND ALL TOLERANCES ±1.0

45 Progress Rd,
Leigh on Sea, S59 5PR
Tel: +44(0)1702 512424
Fax: +44(0)1702 260117
www.guardindoors.com

DRAWN
MB

CHK'D

APP'D

DATE

SCALE
NTS

Dwg No: EUROLOOK TM-4-RH
Guardian maintains a policy of
progressive design and we reserve
the right to modify specifications
without prior notice or alteration to
this drawing

ISSUE

DATE

APP'D

TITLE
EUROLOOK TUBE MOTOR FACE FIX.
7000mm W Max x 2501-3500mm H Max.

1

2

3

4

5

6

7

8

1

20/08/08

RE